

Fir Cone Lace Cap

by Sarah Pope

Whistling Girl Knits



Short rows shape the brim of this 1920s-inspired lace cap, which frames the face with gently scalloped garter stitch before opening into simple Fir Cone lace. Knit to three possible lengths to create just the right volume of slouch for your desired silhouette—it's modeled in the longest size here. The Fir Cone cap was born as a companion piece to the Haro crescent shawl, published as part of Brooklyn Tweed's Wool People 10 collection. Two skeins of Plains is enough yarn to make both pieces.

Size

Measurements are for fabric blocked but unstretched;
height measured from beginning of round point
19 1/2" (49.5 cm) circumference—fits most adult heads;
modeled with 3" negative ease
6 3/4 (8 1/4, 9 3/4") (17, 20, 25 cm) crown height

Materials

Yarn

220 yards laceweight wool

Sample knit in Brooklyn Tweed Plains, colorway "Morandi"

Needles

US #4 (3.5 mm) 16" circular and double pointed needles (dpns)
or size needed to achieve gauge
darning needle

Sundries

Stitch marker

Gauge

Measured over Fir Cone Lace stitch:
24 sts x 44 rows = 4" (10 cm), blocked but unstretched
Each "cone" shape should measure 1 1/4" (3.2 cm) at widest
point and 1 1/2" (3.8 cm) high.

Construction notes

The cap is worked in the round, with a single fir cone form marking the join point. Wrap-and-turn short rows (see Special Techniques) add height to one segment of the brim before the lace portion begins.

Fir Cone cap
Whistling Girl Knits

Fir Cone Cap

Whistling Girl Knits

Abbreviations

CO = cast on
st(s) = stitch(es)
WS = wrong (interior) side of the work
RS = right (exterior) side of the work
k = knit
p = purl
yo = yarn over
sl1-k2tog-ssso = slip 1 stitch purlwise to the right needle, knit together the next 2 stitches, pass the slipped stitch over the new stitch and off the right needle. (double decrease)
ssk = slip 1 stitch knitwise, slip the next stitch purlwise*, then knit them together
k2tog = knit 2 stitches together
p2tog = purl 2 stitches together
L = left
R = right

**Slipping the second stitch purlwise is an innovation I learned at Meg Swansen's Knitting Camp. It twists the stitch and helps it hide behind the first stitch, making it a better mirror for k2tog.*

Directions

CO 120 sts using Cabled Cast-On. (See Special Techniques, especially if substituting another yarn.) Place a marker and join to work in the round.

Rnds 1, 3, 5, 7, 9: Knit.
Rnd 2: Yo, k1, yo, purl to end.
Rnd 4: K1, yo, k1, yo, k1, purl to end.
Rnd 6: K2, yo, k1, yo, k2, purl to end.
Rnd 8: K3, yo, k1, yo, k3, purl to end.
Rnd 10: K3, sl1-k2tog-ssso, k3, purl to end.

shape brim with short rows

Short Row 1: K68, wrap and turn. (See Special Techniques.)
SR 2 (WS): K58, wrap and turn.
SR 3: K55, wrap and turn.
SR 4: K52, wrap and turn.
SR 5: K49, wrap and turn.
SR 6: K46, wrap and turn.
SR 7: K43, wrap and turn.
SR 8: K40, wrap and turn.
SR 9: K37, wrap and turn.
SR 10: K34, wrap and turn.
SR 11: K31, wrap and turn.
SR 12: K28, wrap and turn.
SR 13: K25, wrap and turn.
SR 14: K22, wrap and turn.
SR 15: K19, wrap and turn.
SR 16: K40, p2, p2tog, return the new st to the left needle and pass the next st over it, then slip it back to the right needle. P2, slip marker, wrap and turn.



Complete brim

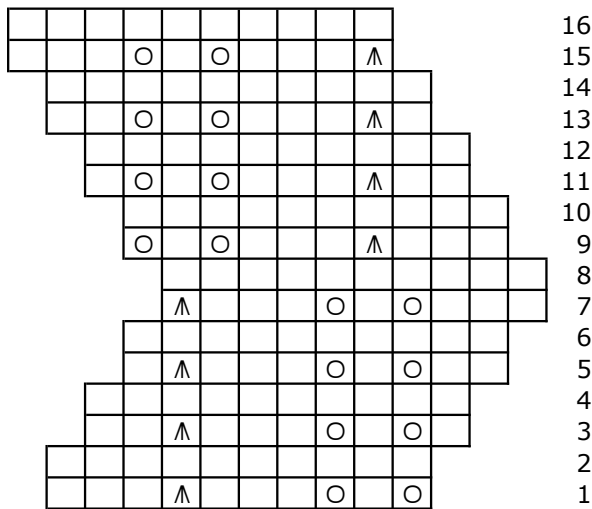
- Rnd 1: Knit.
- Rnd 2: K1, sl1-k2tog-ssso, k1, purl to end.
- Rnd 3: Knit.
- Rnd 4: Sl1-k2tog-ssso, purl to end.
- Rnd 5: Knit.

Begin Fir Cone Lace

Repeat each line's directions to end of round for a total of 12 motifs, or work from chart printed below:

- Rnd 1: Yo, k1, yo, k3, sl1-k2tog-ssso, k3.
- Rnds 2, 4, 6, 8, 10, 12, 14, 16: Knit.
- Rnd 3: K1, yo, k1, yo, k1, k2, sl1-k2tog-ssso, k2.
- Rnd 5: K2, yo, k1, yo, k2, k1, sl1-k2tog-ssso, k1.
- Rnd 7: K3, yo, k1, yo, k3, sl1-k2tog-ssso.
- Rnd 9: K3, sl1-k2tog-ssso, k3, yo, k1, yo.
- Rnd 11: K2, sl1-k2tog-ssso, k2, k1, yo, k1, yo, k1.
- Rnd 13: K1, sl1-k2tog-ssso, k1, k2, yo, k1, yo, k2.
- Rnd 15: Sl1-k2tog-ssso, k3, yo, k1, yo, k3.

Repeat Rounds 1-16 2(3, 4) more times.



Decrease to shape crown

Repeat each line's directions until end of round:

- Rnd 1: P1, ssk, k5, k2tog.
- Rnd 2: P1, k7.
- Rnd 3: P1, ssk, k3, k2tog.
- Rnd 4: P1, k5.
- Rnd 5: P1, ssk, k1, k2tog.
- Rnd 6: P1, k3.
- Rnd 7: P1, sl1-k2tog-ssso.
- Rnd 8: P1, k1.

Chart key

- knit
- yarn over
- Slip 1, k2tog, pass slipped stitch over

Whistling Girl Knits

Fir Cone cap

Fir Cone Cap

Whistling Girl Knits

Finishing

Leaving a 6" tail, cut the yarn, thread it on a darning needle, and pass the tail through all remaining stitches twice. Cinch the loops closed and weave in ends. Block the hat over a hat form, a balloon, or a child's rubber ball of appropriate size. If you have knit the longest size, you may wish to block the crown first, then dampen the lower portion and block it separately.



Special Techniques

Cabled Cast-On

Make a slip knot on L needle to begin, insert R needle into slip knot and knit a new stitch. Place new stitch on L needle. *Insert R needle between the first and second stitch on the L needle, wrap strand of yarn around R needle as you would for a knit stitch and pull through. Transfer this new stitch to the L needle with a twist by taking L needle tip clockwise over the stitch and down into it; repeat from * until all required stitches have been cast on.

This cast-on gives a firm edge to help the brim hold its shape. Be sure to work it loosely enough that the needle tip can pass easily between stitches. Plains is 100% Rambouillet and is extremely springy; it benefits from this reinforcement. If you substitute another yarn you may find that a stretchier method is preferable. Test it on your swatch to be sure the edge will give enough to allow a comfortable fit.

Short Rows: Wrap-and-Turn Method for Garter Stitch

Slip next stitch from left to right, pass yarn between the needles to the front of the work, return the slipped stitch to the left needle, and turn the work to the opposite side. The yarn is ready to knit at the back of the work. Don't pull the wrap too snugly as you begin to knit, but don't leave a sloppy loop either. The wrap should look just like a garter bump and disappear into the fabric without requiring concealment when you work the wrapped stitch again.

Questions or comments?

Please don't hesitate to contact me! I'd love to see pictures of your Fir Cone cap, too.

Email: sarah@whistlinggirlknits.com

Ravelry: [whistlinggirl](https://www.ravelry.com/people/whistlinggirl)

Instagram: [@whistlinggirlknits](https://www.instagram.com/whistlinggirlknits)