

# gothic lace

beginner lace cowl or scarf ♥ by Tin Can Knits



Learn to knit lace! Reminiscent of the arched windows of gothic cathedrals, this simple lace pattern is repetitive, rhythmic and symmetrical, making it perfect for beginner lace knitters.

**Intimidated by chart reading and blocking?** We created an [in-depth tutorial](#) covering all the techniques you need for this project. Get started knitting lace today!

 ravelry ::: cast on

**sizing:** Short (long) cowl measures approximately 10 inches wide by 22 (44) inches long before blocking. Scarf measures approximately 8 inches wide by 60 inches long. After blocking the piece will grow somewhat, depending on yarn choice and how aggressively you block the lace.

To adjust width, add or subtract a multiple of 8 sts (*this will impact yardage required*).

## materials:

- Yarn:** Worsted / aran weight yarn  
200 yds for short cowl, 400 yds for long cowl or scarf  
(sample shown [Malabrigo Worsted](#) in 'frost grey')
- Needles:** US #8 / 5mm needles (*or as req'd to meet gauge*)
- Gauge:** 18 sts and 24 rows / 4" in stockinette stitch
- Notions:** stitch markers, darning needle, 8 buttons  
(for buttoned cowl), 5mm crochet hook  
(if desired for crocheted button detail)



**pattern:** The gothic lace cowl (or scarf) is knit from end to end. When making the cowl, you may choose to work regular knit buttonholes within the garter end band, or work crocheted button loops (*as shown in sample*). If you prefer, simply sew the ends of the cowl together.

## GOTHIC LACE cowl or scarf

[in-depth tutorials](#) ▪ [irresistible modern knits](#) ▪ [excellent support](#)   
[fabulous free patterns](#) ▪ check out [The Simple Collection](#)

by **Tin Can Knits**

Emily Wessel and Alexa Ludeman

[www.tincanknits.com](http://www.tincanknits.com) © Tin Can Knits 2014

## cowl:

Cast on 49 sts. Knit 8 rows.

Repeat rows 1-12 of gothic lace pattern, following chart or written instructions, until piece measures approximately 21 (43) inches.

**For knit buttonholes:** knit 4 rows. Next row work buttonholes: k3, [yo, k2tog, k4] 7 times, yo, k2tog, k2. Knit 3 more rows, then bind off all sts loosely.

**For crocheted button loops:** knit 8 rows. Bind off all sts loosely. Using crochet hook and yarn, begin with WS of work facing, working into the bind-off row. Pattern uses American crochet terminology.

**Foundation row (WS):** Work sl-st into first 2 sts, [ch4, skip 3 bind off sts, sl-st into next 3 bind off sts, ch4, skip 3 bind off sts, sl-st into next 2 bind off sts] repeat 3 more times, sl-st to end. This forms 8 button loops.

**Next row (RS):** work sc to button loop, [sc 5 times into button loop, sc once] repeat 8 times, sc to end.

## scarf:

Cast on 41 sts. Knit 8 rows.

Repeat rows 1-12 of gothic lace pattern, following chart or written instructions, until piece measures approximately 59 inches.

Knit 8 rows, then bind off all sts loosely.

## finishing:

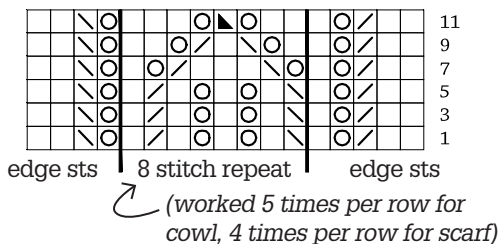
**Weave in all ends.** Wet block your cowl or scarf, stretching it out to open up the lace pattern. To wet block, soak your knit in lukewarm water, then lay it out on a towel, roll up and stomp on the towel to squeeze out as much water as possible. Finally lay out flat (pinning along edges if desired) until completely dry.

Sew on buttons opposite buttonholes.

## chart: gothic lace

[how to read knitting charts](#)

Repeat rows 1-12



## gothic lace:

[how to knit lace](#)

**Row 1 (RS):** k2, k2tog, yo, k1, [ssk, k1, yo, k1, yo, k1, k2tog, k1] repeat to last 4 sts, yo, ssk, k2

**Row 2 and all following WS rows:** k3, purl to last 3 sts, k3

**Rows 3 & 5:** as row 1

**Row 7:** k2, k2tog, yo, k1, [yo, ssk, k3, k2tog, yo, k1] repeat to last 4 sts, yo, ssk, k2

**Row 9:** k2, k2tog, yo, k1, [k1, yo, ssk, k1, k2tog, yo, k2] repeat to last 4 sts, yo, ssk, k2

**Row 11:** k2, k2tog, yo, k1, [k2, yo, sl1-k2tog-psycho, yo, k3] repeat to last 4 sts, yo, ssk, k2

**Note:** you may wish to place markers at start and end of pattern repeats indicated by square brackets [ ] in text and heavy vertical lines in chart.

## chart notes

Chart shows RS (odd numbered) rows only.

**All WS (even numbered) rows:** k3, purl to last 3 sts, k3

Read chart rows from right to left, and from row 1 up to row 12. Each square represents a stitch, as indicated by the key. Work edge stitches first, to heavy line. The heavy lines indicate the stitch repeat; work this section of the chart as many times as possible in the row, then finish with the edge sts at end of row.

## key and abbreviations

- k** - knit
- yo** - yarn over
- k2tog** - knit 2 together
- ssk** - slip, slip, knit - slip 1 knitwise, slip 1 knitwise, put 2 slipped sts back on LH needle and k2tog through back loops
- sl1-k2tog-psycho** - slip 1 knitwise, knit 2 together, pass slipped st over
- ch** - crochet chain stitch
- LH** - left hand
- sl-st** - crochet slip stitch
- sc** - single crochet
- st(s)** - stitch(es)
- RS** - right side
- WS** - wrong side

\* You are welcome to share this free pattern with friends, or use for teaching. For further usage info contact [tincanknits@gmail.com](mailto:tincanknits@gmail.com)

## GOTHIC LACE cowl or scarf

[in-depth tutorials](#) ■ [irresistible modern knits](#) ■ [excellent support](#) ■ [fabulous free patterns](#) ■ check out [The Simple Collection](#)



by **Tin Can Knits**

Emily Wessel and Alexa Ludeman

[www.tincanknits.com](http://www.tincanknits.com) © Tin Can Knits 2014



Tin Can Knits

♥ in Vancouver + Edinburgh

♥ [www.tincanknits.com](http://www.tincanknits.com)



**gramps**



**pop blanket**



**antler**



**low tide**



**vivid**



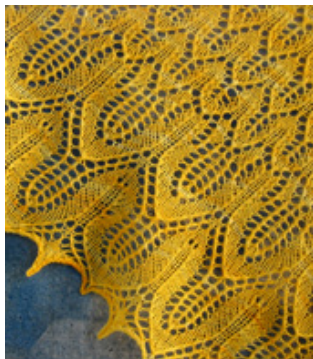
**bonny**



**sitka spruce**



**windswept**



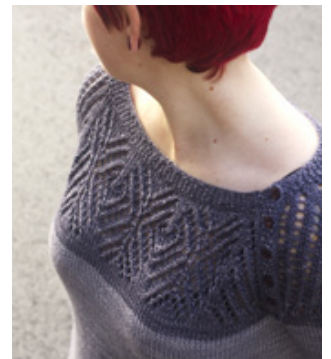
**sunflower**



**lush**



**dogwood**



**snowflake**



**campfire**



**mukluks**



**raindrops**



**stovetop**