

Shawl “Wild grape”

This is pattern for advanced lace knitters. It is based on traditional Estonian motifs for Haapsalu shawls.

Recommended yarns:

All kind yarns suitable for lace knitting starting from thin mohair to cotton.

Description:

Cast on 54 sts.

Start to knit according to Chart 3.

Then knit according to Chart 2, repeat 16 times.

Finish shawl knitting according to Chart 1.

* All charts show even and odd rows. Edge sts are included.



- ☐ - k, knit
- ▬ - p, purl
- ▮ - s, slip
- - yo, yarn over
- ▧ - k2tog, knit 2 together
- ▨ - ssk, slip knit
- ⊕ - k3tog, knit 3 together

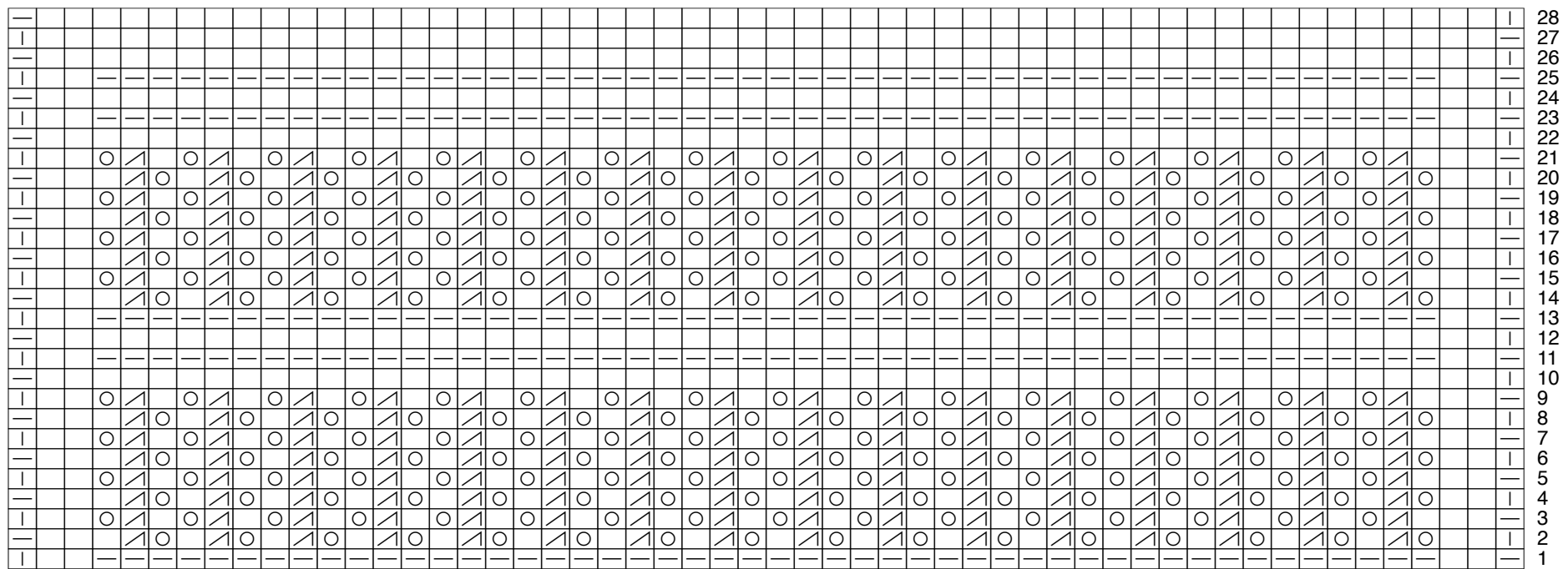


Figure 3. Chart for ending of the shawl.

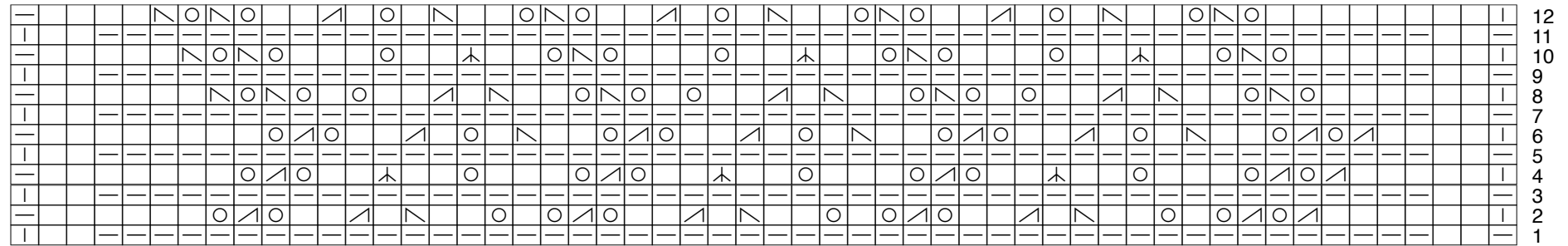


Figure 2. Chart for middle motif. Repeat 16 times.

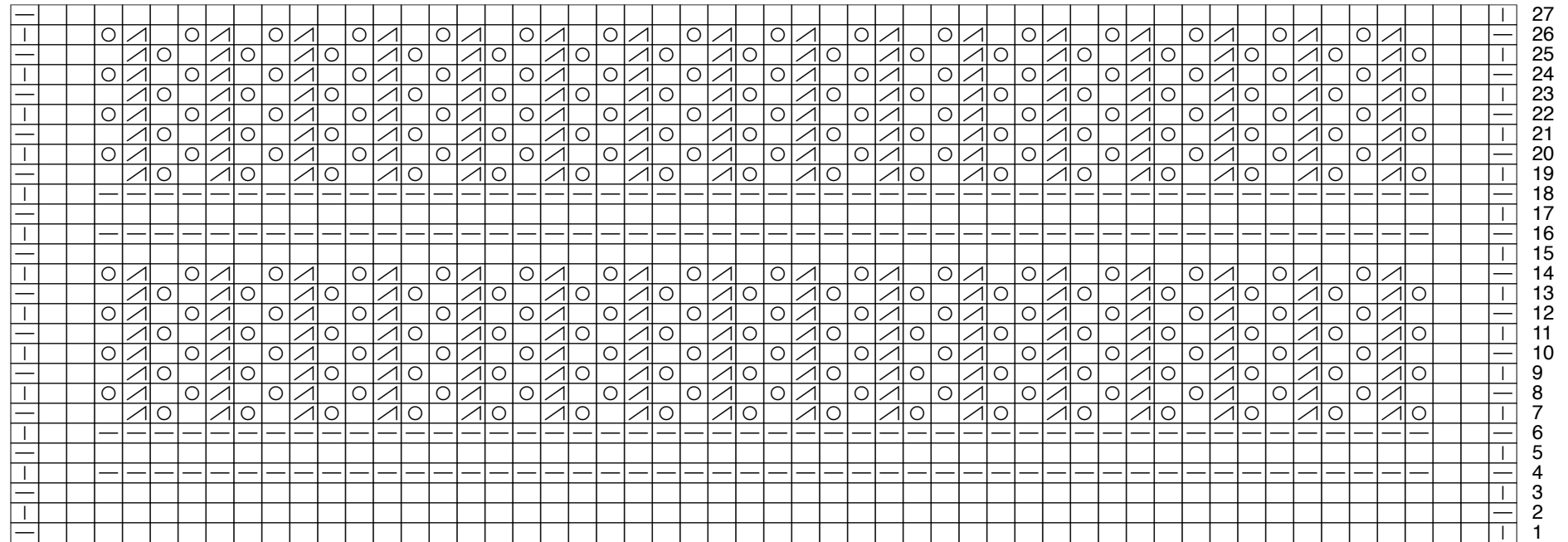


Figure 3. Chart for beginning of the shawl.