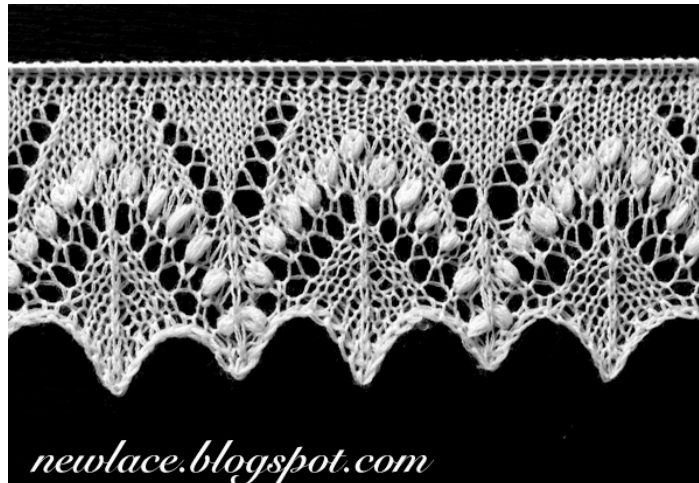


Edge lace "Silvia"



Picture 1.



Picture 2.



Picture 3.

Introduction

Pattern of the edge lace motives “Silvia” are inspired by the traditional stitch motif “Silvia” which is enriched with great amount of nups. The edge lace is forming a zigzag edge with changing textures.

Description and tips

Charts include odd rows only. The edge and repetitive middle part of the motif are separated by the empty space. Numbers on the right side of the charts indicate row number. Edge stitches are not included.

For stitches of **even** rows there are two possibilities:

- purl all stitches and you will get **stockinette based lace texture** as on the **Pictures 1, 2 and 3**

or

- knit all stitches and you will get **garter stitch based lace texture** as it is traditionally done for Haapsalu shawl borders.

All charts require the following amount of stitches: **19 stitches** (edges of the motif) + **18 stitches · X times** (repeated middle part of the motif) + 2 (or more) edge stitches (if necessary).

To knit edge lace from **Picture 1** choose **Chart 1**.

To knit edge lace from **Picture 2** choose **Chart 2**.

To knit edge lace from **Picture 3** choose **Chart 3**.

Cast on stitches using **knitted on method** and double yarn with needles at least 0.5 - 1 size larger than you will be using for the edge lace knitting.

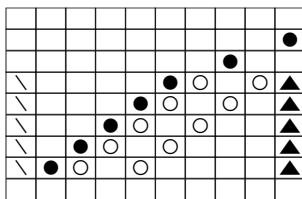
Knit all rows from the selected chart.

Legend

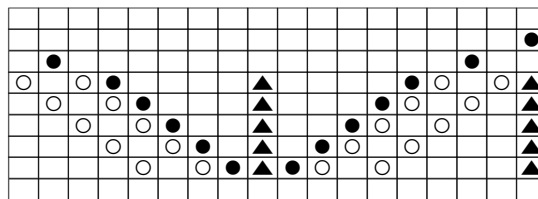
- k, knit
- yo, yarn over
- ▲ knit 3 stitches together with the middle one above, slip two stitches knitwise, knit next stitch and pass two slipped stitches over third stitch
- / k2tog, knit 2 stitches together
- \ ssk, slip 2 stitches as if to knit, then knit those 2 stitches together
- bobble/nupp: knit 5/7/9 stitches out of one (knit, yarnover, knit, yarnover, knit etc.), purl stitches together on the wrong side

Charts

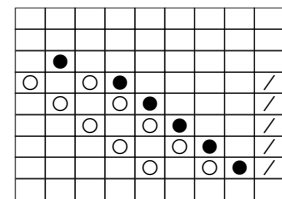
Chart 1



10 stitches



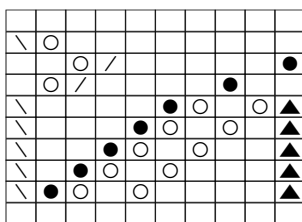
+ 18 stitches · X times



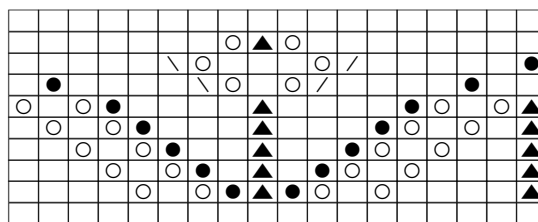
+ 9 stitches

1	7
1	5
1	3
1	1
9	
7	
5	
3	
1	

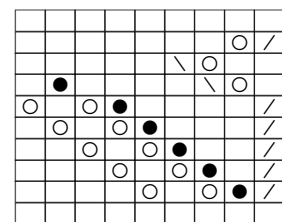
Chart 2



10 stitches



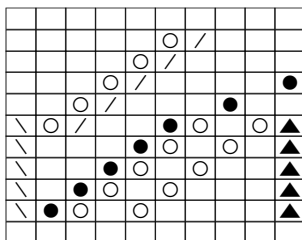
+ 18 stitches · X times



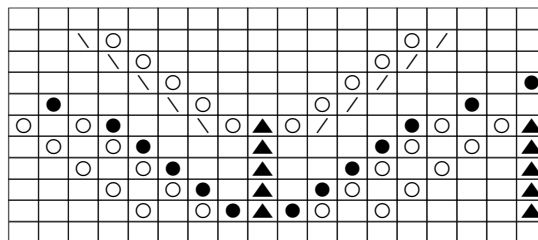
+ 9 stitches

1	9
1	7
1	5
1	3
1	1
9	
7	
5	
3	
1	

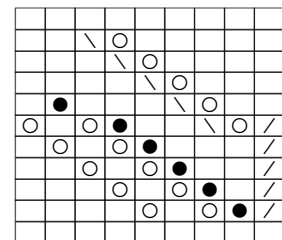
Chart 3



10 stitches



+ 18 stitches · X times



+ 9 stitches

2	1
1	9
1	7
1	5
1	3
1	1
9	
7	
5	
3	
1	