

# Hoist Yonder Anchor

© Rachel Walstead; 2012  
On Ravelry: mathlete27

## Materials:

- > Worsted weight yarn of your choosing: 20-30 yards of CC (blue in model); 50-70 yards of MC (white in model)
- > US Size 8 (5.0mm) DPNs
- > Tapestry needle or crochet hook to weave in ends.
- > Stich marker, if desired



Hoist Yonder Anchor:  
a nautical mug cozy!

My best friend loves coffee and anchors. I decided to knit a cute little mug cozy with an anchor on it to combine these two loves. Here's the pattern so you can do the same! :)

Feel free to knit as many of these as you want and share them with your friends, but please don't sell what you've made using this pattern! Thanks!

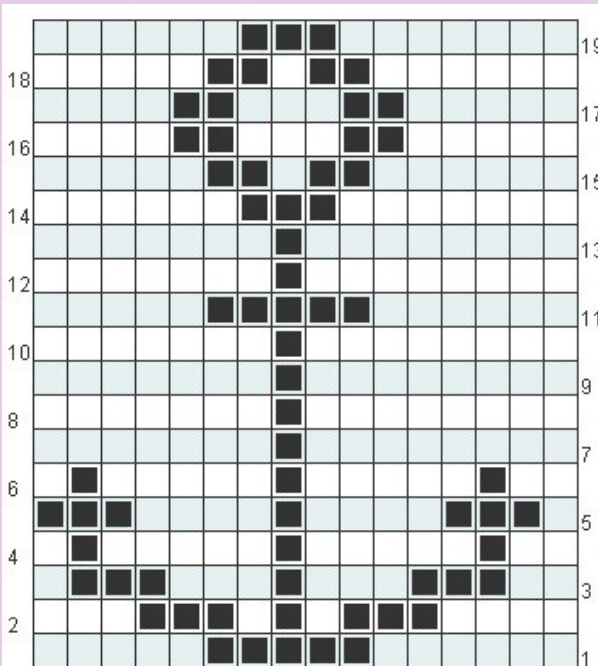
## Directions:

CO 40 stitches

Rounds 1-3: \*K2, P2\* around in CC

Rounds 4-5: K around in MC

Next 19 rounds: Work chart, then knit the remaining stitches around.



created at  
<http://jacquie.typepad.com/Charts/knitChart.htm>

Rounds 25-26: K in MC

Round 27: K in CC

Rounds 28-30: \*K2, P2\* around.

BO all stitches.

All dark stitches in chart should be knitted in CC.

CC should be stranded across behind the motif.

Once you get to the end of the anchor, knit around in MC, then pick the CC back up when you need it again on the other side. CC should not be carried all the way around.