



## DESCRIPTION

A versatile wrap, sweetly laced up with satin ribbon. The finished piece is perfect for keeping your shoulders warm on cold nights in the late summer and early fall. It transitions well into winter, when it can be used as a neck warmer and bold accessory to brighten up a plain coat. Fondant is knit in one piece, worked from side to side.

## ONE SIZE

## GAUGE

Gauge is not crucial for this project.

## MATERIALS

Malabrigo Aquarella, 100% Wool, 65 yards, 100 grams: 2 skeins  
 US 13/9mm and 15/10mm straight or circular needles  
 Yarn needle  
 2.5 to 3 yds 1 to 1.5 inch satin ribbon

## SKILL LEVEL

Easy

## ABBREVIATIONS

CO - Cast on	sl - slip
k - knit	ssk - slip, slip, knit
k2tog - knit 2 stitches together	st(s) - stitch(es)
p - purl	WS - wrong side
rep - repeat	yo - yarn over
RS - right side	

sl2-k1-p2sso - slip two stitches together knitwise, knit the next stitch, pass the two slipped stitches over the knit stitch.

## NOTES

On page two of this pattern you will find instructions for different ways to lace up and wear your finished Fondant. Treat the ends of the ribbon with an anti-fray treatment (found at most fabric/craft stores) to keep it looking pretty.  
[www.lachesisandco.blogspot.com](http://www.lachesisandco.blogspot.com)

## DIRECTIONS

### LEFT GARTER BAND

CO 21 sts on size 13 needle.

Rows 1 and 2 - knit.

Row 3 - eyelet row, \* k1, k2tog, yo, rep from \* to last 3 sts, k3.

Rows 4 and 5 - knit.

### BODY

Switch to size 15 needles.

Row 1 (WS) - purl.

Row 2 (RS) - k1, \* yo, sl2-k1-p2sso, yo, k1, rep from \* to end of row.

Row 3 - purl.

Row 4 - ssk, yo, k1, \* yo, sl2-k1-p2sso, yo, k1, rep from \* to last 2 sts, yo, k2tog.

Repeat these four rows until piece measures approximately 34 inches (or length desired) from CO edge, ending with a WS row.

### RIGHT GARTER BAND

Switch to size 13 needles.

Rows 1 and 2 - knit.

Row 3 - eyelet row, \* k1, k2tog, yo, rep from \* to last 3 sts, k3.

Rows 4 and 5 - knit.

Loosely bind off all sts knitwise.

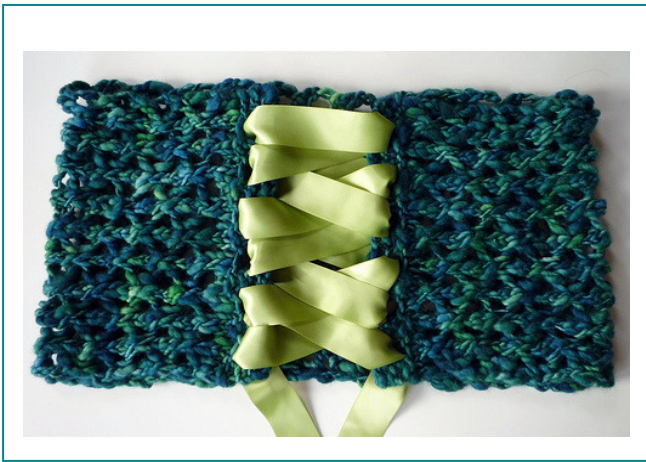
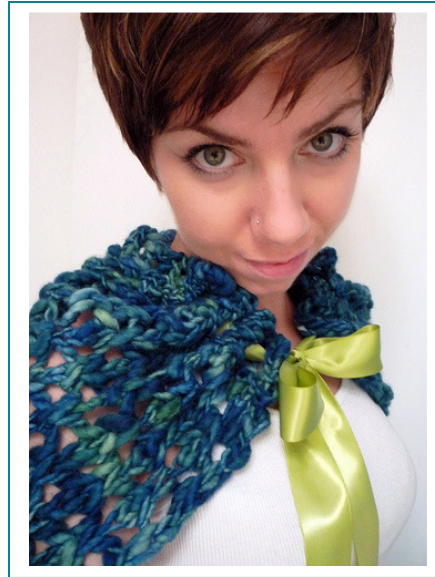
### FINISHING

Weave in all ends. Wash and block, being careful not to stretch the garter bands too much as you block the lace body.

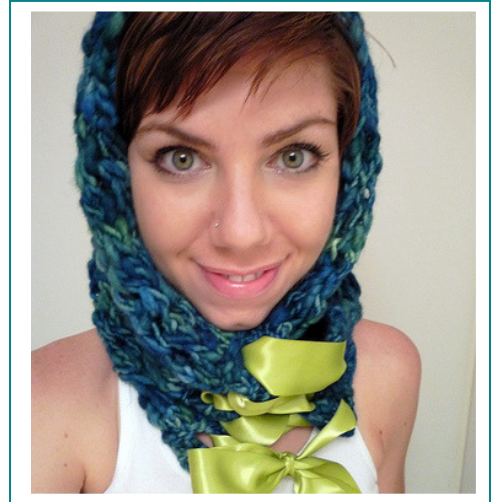
Approximate finished measurements: 40 inches/102 cm long and 12 inches/31 cm wide.



Lace like this...to wear like this.



Lace it up this way...



...for these two styles.

Experiment with all the different ways you can wrap up in Fondant to stay warm and sweet!