



Mystery Medallion Shawl by Jen Hansen <http://knittinglikecrazy.com>

Knitting Like Crazy Mystery Shawl KAL – May 2011

Finished Measurements: 48” wide and 18” long at center points, after blocking

Materials:

- 1 skein The Sanguine Gryphon Bugga! Sock Yarn, 10% Nylon, 20% Cashmere, 70% Superwash Merino, 412 yards/110 grams
- US Size 4 (3.5mm) or size needed to obtain gauge, knitting needles
- Stitch markers - 2
- Tapestry needle
- Blocking pins

Gauge: 24 sts and 28 rows=4” in stockinette stitch

Abbreviations:

CO	cast on
k	knit
p	purl
yo	yarn over
RS	right side
WS	wrong side
st(s)	stitch(es)
pm	place marker
sm	slip marker
k2tog	knit 2 stitches together
ssk	slip a stitch as if to knit to right needle, slip a second stitch as if to knit to right needle, slip both stitches back to left needle and knit together through the back loops
sl1	slip stitch
pssso	pass the slipped stitch over

Clue #1 – Released 5/6/2011

Instructions:

Set-Up Rows:

CO 11sts. Knit 2 rows.

Row 1 (RS): k3, yo, k1, yo, pm, k1, yo, k1, yo, k1, pm, yo, k1, yo, k3 (17 sts).

Row 2 (WS): k3, p to the last 3 sts (slipping the markers along the way), k3.

Row 3: k3, yo, k to marker, yo, sm, k1, yo, k to 1 st before marker, yo, k1, sm, yo, k to the last 3 sts, yo, k3.

Row 4: k3, p to the last 3 sts (slipping the markers along the way), k3.

Repeat Rows 3 & 4 five more times (17 sts between markers; 53 sts total). Continue to Section A.

Section A:

Row 1: k3, yo, k to marker, yo, sm, work first row of Mystery Medallion Chart, sm, yo, k to last 3 sts, yo, k3.

Row 2: k3, p to marker, sm, work second row of Mystery Medallion Chart, sm, p to last 3 sts, k3.

Row 3: k3, yo, k to marker, yo, sm, work next row of Mystery Medallion Chart, sm, yo, k to last 3 sts, yo, k3.

Row 4: k3, p to marker, sm, work next row of Mystery Medallion Chart, sm, p to last 3 sts, k3.

Repeat Rows 3 & 4 until Mystery Medallion Chart has been worked twice (165 sts total).

Mystery Medallion Chart:

Row 1 (RS): k6, k2tog, yo, k1, yo, ssk, k6.

Row 2 & all even-numbered rows (WS): p17.

Row 3: k5, k2tog, yo, k3, yo, ssk, k5.

Row 5: k4, k2tog, yo, k2tog, yo, k1, yo, ssk, yo, ssk, k4.

Row 7: k3, k2tog, yo, k2tog, yo, k3, yo, ssk, yo, ssk, k3.

Row 9: k2, k2tog, yo, k2tog, yo, k2tog, yo, k1, yo, ssk, yo, ssk, yo, ssk, k2.

Row 11: k1, k2tog, yo, k2tog, yo, k2tog, yo, k3, yo, ssk, yo, ssk, yo, ssk, k1.

Row 13: k2tog, yo, k2tog, yo, k2tog, yo, k5, yo, ssk, yo, ssk, yo, ssk.

Row 15: k1, yo, ssk, yo, ssk, yo, ssk, k3, k2tog, yo, k2tog, yo, k2tog, yo, k1.

Row 17: k2, yo, ssk, yo, ssk, yo, ssk, k1, k2tog, yo, k2tog, yo, k2tog, yo, k2.

Row 19: k3, yo, ssk, yo, ssk, yo, sl1 k2tog pssso, yo, k2tog, yo, k2tog, yo, k3.

Row 21: k4, yo, ssk, yo, ssk, k1, k2tog, yo, k2tog, yo, k4.

Row 23: k5, yo, ssk, yo, sl1 k2tog pssso, yo, k2tog, yo, k5.

Row 25: k6, yo, ssk, k1, k2tog, yo, k6.

Row 27: k7, yo, sl1 k2tog pssso, yo, k7.

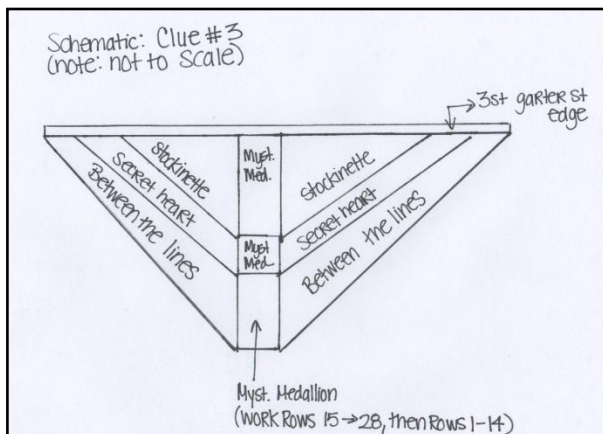
Legend:

<input type="checkbox"/>	knit RS: knit stitch WS: purl stitch
<input checked="" type="checkbox"/>	k2tog RS: Knit two stitches together as one stitch
<input checked="" type="checkbox"/>	yo RS: Yarn Over
<input checked="" type="checkbox"/>	ssk RS: Slip one stitch as if to knit, Slip another stitch as if to knit. Insert left-hand needle into front of these 2 stitches and knit them together
<input checked="" type="checkbox"/>	sl1 k2tog pssso RS: slip 1, k2tog, pass slip stitch over k2tog

	17	16	15	14	13	12	11	10	9	8	7	6	5	4	3	2	1
28																	
								o	∩	o							
26																	
							o	/		\	o						
24																	
							o	/	o	∩	o	\	o				
22																	
							o	/	o	/		\	o	\	o		
20																	
							o	/	o	/	o	∩	o	\	o	\	o
18																	
							o	/	o	/	o	/		\	o	\	o
16																	
							o	/	o	/	o	/		\	o	\	o
14																	
							\	o	\	o	\	o		o	/	o	/
12																	
							\	o	\	o	\	o		o	/	o	/
10																	
							\	o	\	o	\	o		o	/	o	/
8																	
							\	o	\	o			o	/	o	/	
6																	
							\	o	\	o			o	/	o	/	
4																	
							\	o				o	/				
2																	
							\	o		o	/						
1																	

Clue #3 – Released 5/20/2011

The following is a schematic for how the shawl should be forming after Clue #3. You can use it as a reference as you work through Clue #3:



After completing Section B in Clue #2, there should be 209 sts total. Continue to Section C.

Section C:

Note: Please read all the instructions before starting this section!

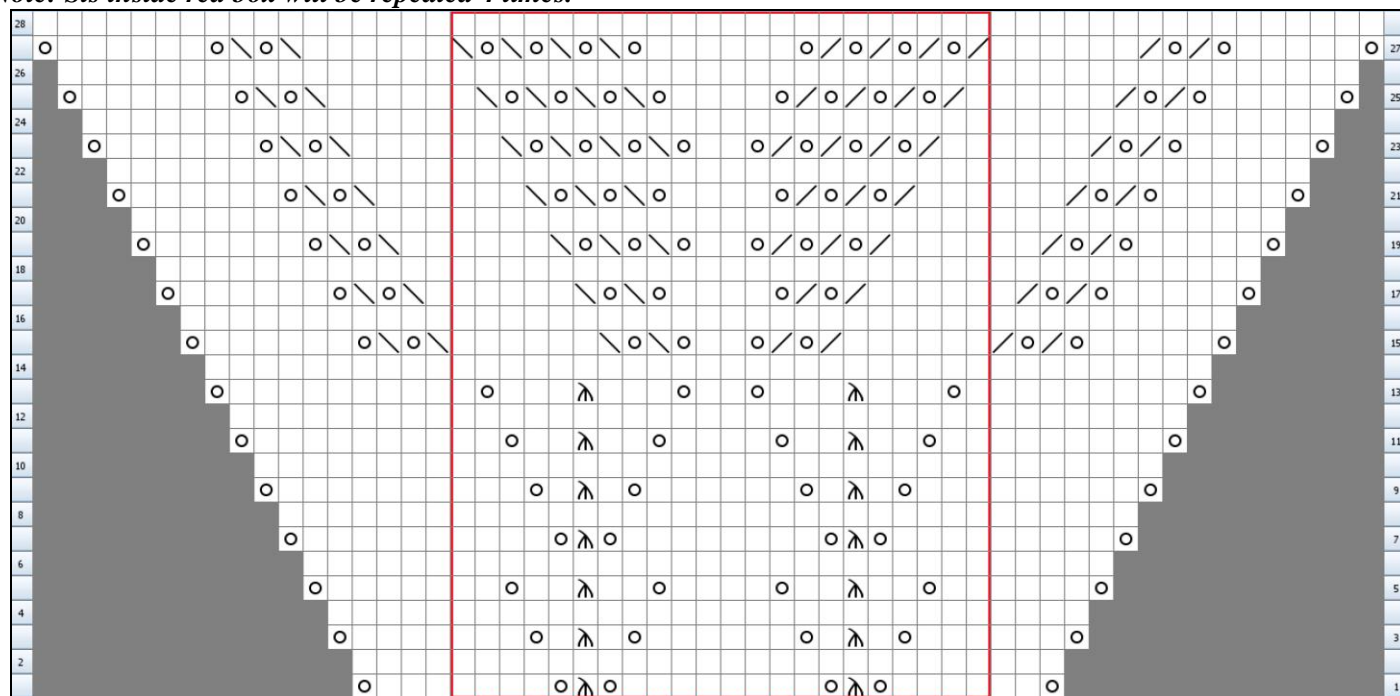
This section is 28 rows total. In the center section between the 2 stitch markers, work Rows 15- 28, followed by Rows 1-14 of the Mystery Medallion Chart (from Clue #1).

The first three and last three stitches of the shawl will continue to be garter st (k every row). For the body of the shawl (i.e. between the 3 st garter edge and the stitch marker separating the Mystery Medallion, work Rows 1-28 of the Between the Lines Chart Below.

After these 28 rows have been worked, the shawl will have 265 sts total.

Between the Lines Chart:

Note: Sts inside red box will be repeated 4 times.



Row 1 (RS): yo, k2, (k4, yo, sl1 k2tog psso, yo, k8, yo, sl1 k2tog psso, yo, k4) four times, k3, yo.

Rows 2 & all even rows (WS): p.

Row 3: yo, k3, (k3, yo, k1, sl1 k2tog psso, k1, yo, k6, yo, k1, sl1 k2tog psso, k1, yo, k3) four times, k4, yo.

Row 5: yo, k4, (k2, yo, k2, sl1 k2tog psso, k2, yo, k4, yo, k2, sl1 k2tog psso, k2, yo, k2) four times, k5, yo.

Row 7: yo, k5, (k4, yo, sl1 k2tog psso, yo, k8, yo, sl1 k2tog psso, yo, k4) four times, k6, yo.

Row 9: yo, k6, (k3, yo, k1, sl1 k2tog psso, k1, yo, k6, yo, k1, sl1 k2tog psso, k1, yo, k3) four times, k7, yo.

Row 11: yo, k7, (k2, yo, k2, sl1 k2tog psso, k2, yo, k4, yo, k2, sl1 k2tog psso, k2, yo, k2) four times, k8, yo.

Row 13: yo, k8, (k1, yo, k3, sl1 k2tog psso, k3, yo, k2, yo, k3, sl1 k2tog psso, k3, yo, k1) four times, k9, yo.

Row 15: yo, k5, (yo, k2tog) twice, (k6, k2tog, yo, k2tog, yo, k2, yo, ssk, yo, ssk, k6) four times, (ssk, yo) twice, k6, yo.

Row 17: yo, k5, (yo, k2tog) twice, k1, (k5, k2tog, yo, k2tog, yo, k4, yo, ssk, yo, ssk, k5) four times, k1, (ssk, yo) twice, k6, yo.

Row 19: yo, k5, (yo, k2tog) twice, k2, (k4, k2tog, yo, k2tog, yo, k2tog, yo, k2, yo, ssk, yo, ssk, yo, ssk, k4) four times, k2, (ssk, yo) twice, k6, yo.

Row 21: yo, k5, (yo, k2tog) twice, k3, (k3, k2tog, yo, k2tog, yo, k2tog, yo, k4, yo, ssk, yo, ssk, yo, ssk, k3) four times, k3, (ssk, yo) twice, k6, yo.

Row 23: yo, k5, (yo, k2tog) twice, k4, (k2, k2tog, yo, k2tog, yo, k2tog, yo, k2tog, yo, k2, yo, ssk, yo, ssk, yo, ssk, yo, ssk, k2) four times, k4, (ssk, yo) twice, k6, yo.

Row 25: yo, k5, (yo, k2tog) twice, k5, (k1, k2tog, yo, k2tog, yo, k2tog, yo, k2tog, yo, k4, yo, ssk, yo, ssk, yo, ssk, yo, ssk, k1) four times, k5, (ssk, yo) twice, k6, yo.

Row 27: yo, k5, (yo, k2tog) twice, k6, (k2tog, yo, k2tog, yo, k2tog, yo, k2tog, yo, k6, yo, ssk, yo, ssk, yo, ssk, yo, ssk) four times, k6, (ssk, yo) twice, k6, yo.

