

# TRUCKIN' TIME PATTERN



*This crochet big rig is perfect for play time and nap time! Make one up in your special trucker's favorite colors or put together a whole fleet!*

# TRUCKIN' TIME PATTERN

*This crochet big rig is perfect for play time and nap time! Make one up in your special trucker's favorite colors or put together a whole fleet.*

## MATERIALS

- Small amounts of sport weight yarn in blue, dark blue, white, and black or desired colors (see pattern notes for specific yarns used)
- Fiber fill
- Buttons (optional: see pattern notes)
- Small amount black embroidery floss
- Size E crochet hook (or size needed to obtain gauge)
- Yarn needle
- Embroidery needle

## PATTERN NOTES

Stitches and abbreviations used in this pattern:

CH	chain stitch
SC	single crochet
DC	double crochet
ST	stitch
STS	stitches
FO	finish off

For the project shown in the photographs, I used Red Heart Sport yarn in Skipper Blue, Black, and White. I also used a small amount of navy blue yarn in sock weight for the truck's windshield.

When determining whether to use buttons or other small embellishments, keep in mind the age of the intended recipient. Buttons like the ones used in my project may pose a choking hazard for children under three. A safer alternative for the very young is to sew headlights using embroidery thread or yarn.

## PART 1: TRUCK CAB PIECES

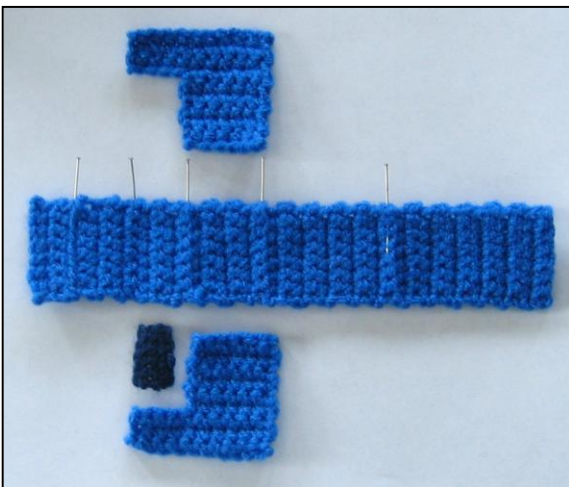


Figure 1

The cab for the big rig is made in four pieces: two sides, a windshield, and a piece I call the top/bottom. The finished pieces are shown in figure 1.

### SIDES (MAKE 2)

**Row 1:** With cab color, CH 11. SC is second CH from hook and in each SC across (10 SC). CH 1 and turn.

**Rows 2-3:** SC in each ST across (10 SC). CH 1 and turn.

**Row 4:** SC in first 6 STS (6 SC). CH 1 and turn.

**Rows 5-8:** SC in each ST across (6 SC). CH 1 and turn.

**Row 9:** SC in each ST across (6 SC). FO and weave in ends.

## TOP/BOTTOM (MAKE 1)

The top/bottom piece will be attached between the two sides you just made. To help the piece follow the contour of the two sides and ensure that it folds in the correct places, rows 4, 9, 13, 19 and 29 are worked in either the front or back loops of the previous row. The fold rows will fall as shown by the pins in the image below.

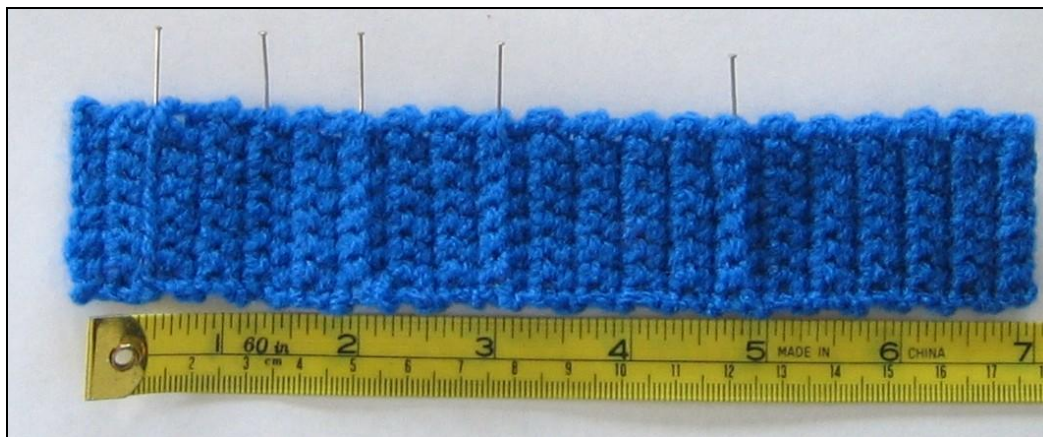


Figure 2

**Row 1:** With cab color, CH 8. SC in second CH from hook an in each CH across (7 SC). Mark this side as the right side, CH 1 and turn.

**Rows 2-3:** SC in each ST across (7 SC). CH 1 and turn.

**Row 4:** *Working in BACK loops:* SC in each ST across. CH 1 and turn (7 SC).

**Rows 5-8:** *Working in both loops:* SC in each ST across. CH 1 and turn (7 SC).

**Row 9:** *Working in FRONT loops:* SC in each ST across. CH 1 and turn (7 SC).

**Rows 10-12:** *Working in both loops:* SC in each ST across. CH 1 and turn (7 SC).

**Row 13:** *Working in BACK loops:* SC in each ST across. CH 1 and turn (7 SC).

**Rows 14-18:** *Working in both loops:* SC in each ST across. CH 1 and turn (7 SC).

**Row 19:** *Working in BACK loops:* SC in each ST across. CH 1 and turn (7 SC).

**Rows 20-28:** *Working in both loops:* SC in each ST across. CH 1 and turn (7 SC).

**Row 30:** *Working in BACK loops:* SC in each ST across. CH 1 and turn (7 SC).

**Rows 31-38:** *Working in both loops:* SC in each ST across. CH 1 and turn (7 SC).

**Rows 39:** SC in each ST across (7 SC). FO and weave in ends.

## WINDSHIELD (MAKE 1)

**Row 1:** With windshield color, CH 6. SC in second CH from hook an in each CH across (5 SC). CH 1 and turn.

**Row 2:** SC in each ST across (5 SC). CH 1 and turn.

**Row 3:** SC in each ST across (5 SC). FO and weave in ends.

## PART 2: TRUCK CAB ASSEMBLY

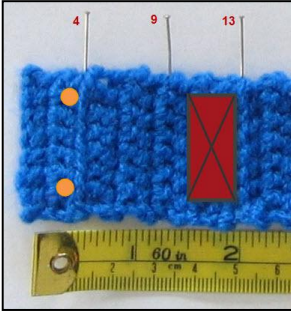


Figure 3

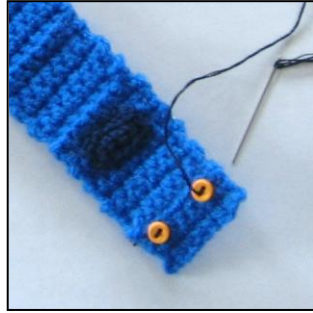


Figure 4



Figure 5



Figure 6



Figure 7



1. Using a small amount of windshield-colored yarn and a yarn needle, attach the windshield to right side of top/bottom between rows 9 and 13. See figure 3 for reference.
  2. Optional (see pattern notes). Using embroidery thread, attach button headlights to right side of top/bottom on row 3. See figure 3 for reference.
  3. Flip top/bottom so that wrong side is facing up.
  4. Using cab-colored yarn and a yarn needle, attach the wider section of one side piece to row one of the top/bottom. See figure 4 for reference.
  5. Continue to attach the outer edges of the side piece to the wrong side of the top/bottom as shown in figure 4. Leave the edge along where the front bumper would be unfinished.
- Note:** If you flip the cab over now to peek at the right side, your progress should look like figure 5.
6. Repeat steps 4 and 5 with the other side piece, again leaving the stitches where the front bumper would go un-sewn.
- Note:** When you are finished attaching the sides to the top/bottom, your piece should look like figure 6.
7. Turn the cab right-side out and stuff with fiberfill.
  8. Stitch closed along the front bumper edge.
  9. With remaining bit of yarn, loop one large stitch across the hood of the truck cab, just below the windshield. Pull this loop tight to emphasize the angle between the hood and the windshield.
  10. Finish off and weave in any loose ends. You can now set the cab aside for later.

## PART 3: TRAILER PIECES



Figure 8

The trailer is made in six pieces: two sides, a top/bottom, and the front/back. The finished pieces are shown from left to right in figure 8.

### SIDES (MAKE 2)

**Row 1:** With trailer color, CH 31. SC is second CH from hook and in each SC across (30 SC). CH 1 and turn.

**Rows 2-8:** SC in each ST across (30 SC). CH 1 and turn.

**Row 9:** SC in each ST across (30 SC). FO and weave in ends.

## TOP/BOTTOM (MAKE 2)

**Row 1:** With trailer color, CH 8. SC is second CH from hook and in each SC across (7 SC). CH 1 and turn.

**Rows 2-30:** SC in each ST across (7 SC). CH 1 and turn.

**Row 31:** SC in each ST across (7 SC). FO and weave in ends.

## FRONT/BACK (MAKE 2)

**Row 1:** With trailer color, CH 8. SC is second CH from hook and in each SC across (7 SC). CH 1 and turn.

**Rows 2-8:** SC in each ST across (7 SC). CH 1 and turn.

**Row 9:** SC in each ST across (7 SC). FO and weave in ends.

## PART 4: TRAILER ASSEMBLY



Figure 9

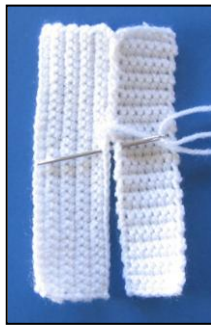


Figure 10

1. Begin by laying out the sides and the top/bottom pieces in alternating order. It does not matter which piece you start with, but your goal is to have side in between the top and bottom pieces. See figure 9 for reference.

2. Using a length of the trailer-colored yarn and a yarn needle, whip stitch the long edges of these pieces together. You will sew along the long sides of the shapes a total of four times to make a hollow rectangle shape.

3. When the four long pieces are stitched together, you can attach the front and back pieces to either the top or the bottom strip. See figure 11.

**Note:** The rows on the front and back pieces run in the same direction as the rows on the top and bottom pieces.

4. Stitch all the way around one of the front/back pieces and stitch three sides on the other piece.

**Note:** When you have finished with step 4, you will have a closed rectangle shape with the exception of one small seam. See figure 12 for reference.

5. Turn your trailer right-side out and stuff with fiberfill. When your trailer is stuffed as desired, whip stitch the remaining edge closed.

6. Finish off and weave in any loose ends. Put the trailer aside.



Figure 11

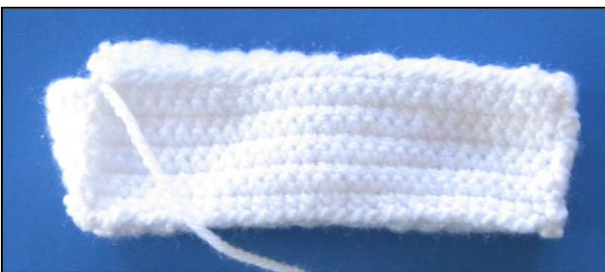


Figure 12

## PART 5: WHEELS

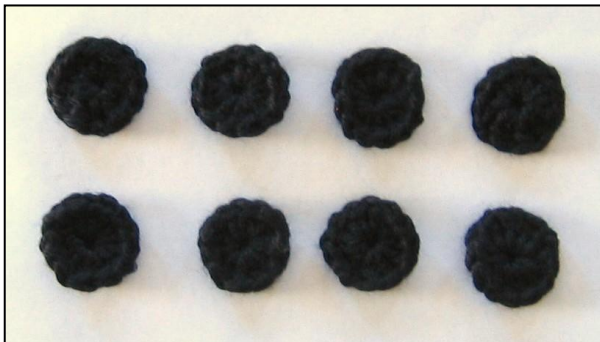


Figure 13

The wheels are simple black circles made in two rounds. You will need 8 wheels to complete the big rig project.

### WHEELS (MAKE 8)

**Round 1:** CH 3. Join with SC to form a loop.

**Round 2:** CH2 (counts as first DC). DC 12 more times in loop. Join to first DC to connect the round. FO and weave in ends.

## PART 6: FINAL ASSEMBLY



Figure 14

1. Using a length of the trailer-colored yarn and a yarn needle, whip stitch the cab to the trailer as shown in figure 14. Stitch all the way around and finish off at the bottom of the project.

**Note:** Keep your stitches tight for this step as they will tend to blend more with the joining of the two different colored pieces.

2. Using a length of the black yarn and a yarn needle, attach 4 wheels to each side of the big rig as shown in figure 15.



Figure 15

3. To add the racing stripe, attach a piece of cab-colored yarn between the cab and the trailer.

**Note:** To make it easier to hide your ends, try attaching the yarn for the racing stripe to the underside of the work. Then, bring the yarn up through the body of the trailer.

4. Pull the yarn tight across the body of the trailer and begin the A-shaped chevron just above the back wheels. The peak of the chevron goes in the middle of the two back wheels, as shown in figure 17.



Figure 16

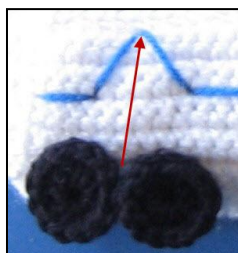


Figure 17

5. Repeat the chevron design on the opposite side of the trailer.

6. Finish off and weave in any loose ends.

**Your big rig is complete!**