

Pattern Instructions

ABBREVIATIONS

K: Knit **P:** Purl **BA:** Border A **BB:** Border B

BORDER INSTRUCTIONS

Choose a border below. Wherever you see **Border Beginning**, **Border Ending**, **BA** or **BB**, substitute with these instructions.

SOLID BORDER

Border Beginning

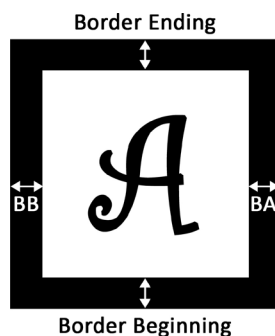
Rows 1-7: Knit across

Border Ending

Rows 55-61: Knit across

Border A (BA): K4

Border B (BB): K4



CHANNEL BORDER

Border Beginning

Rows 1-3, 5, 7: Knit across

Row 4: K2 P35 K2

Row 6: K2 P1 K33 P1 K2

Border A (BA): K2 P1 K1

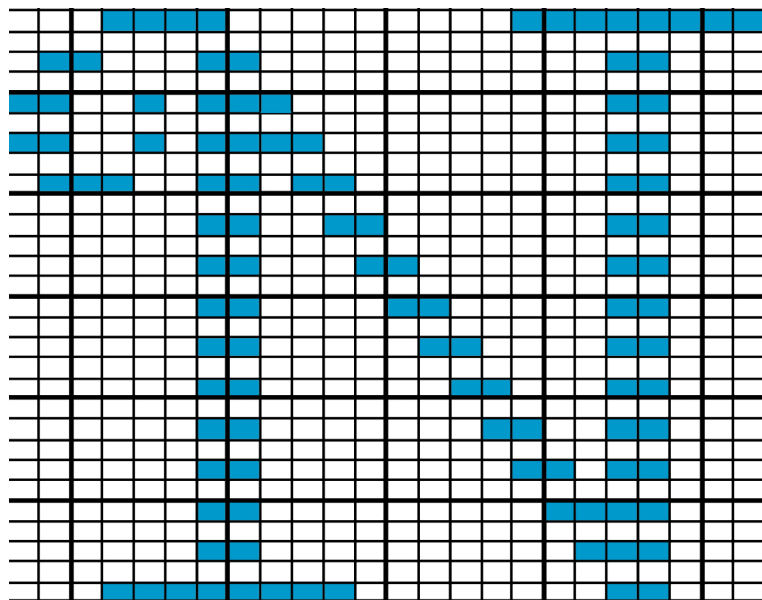
Border Ending

Rows 55, 57, 59-61: Knit across

Row 56: K2 P1 K33 P1 K2

Row 58: K2 P35 K2

Border B (BB): K1 P1 K2



Monogrammed Alphabet for Knitters Letter N

FINISHED SIZE: 8" x 8"

MATERIALS

100% Cotton Medium/Worsted Weight Yarn: One ball. (Actually, much less than one ball.)

Straight knitting needles, size 8

GAUGE not necessary.

PATTERN

Cast on 39 stitches.

Rows 1-7: Border Beginning

Rows 8-54 even (wrong side) rows only: BA P31 BB

Rows 9, 11, 13, 15: Knit across

Row 17: K11 P2 K8 P8 K10

Row 19: K11 P3 K10 P2 K13

Row 21: K11 P4 K9 P2 K13

Row 23: K11 P2 K1 P2 K8 P2 K13

Row 25: K11 P2 K2 P2 K7 P2 K13

Row 27: K11 P2 K3 P2 K6 P2 K13

Row 29: K11 P2 K4 P2 K5 P2 K13

Row 31: K11 P2 K5 P2 K4 P2 K13

Row 33: K11 P2 K6 P2 K3 P2 K13

Row 35: K11 P2 K7 P2 K2 P2 K13

Row 37: K11 P2 K8 P2 K1 P2 K2 P3 K8

Row 39: K11 P2 K9 P4 K1 P1 K2 P2 K7

Row 41: K11 P2 K10 P3 K1 P1 K2 P2 K7

Row 43: K11 P2 K11 P2 K3 P2 K8

Row 45: K8 P8 K9 P4 K10

Rows 47, 49, 51, 53: Knit across

Rows 55-61: Border Ending

Bind off all stitches as desired.

©2013 Heather K. McKelvey

HeatherKate.com