



Leafy Tops Hat

Needles: US 8 (5mm) Circulars/DPN's

US 6 (4mm) Circular Needles

Materials: Tapestry Needle

4 Stitch Markers

Yarn: 1 Skein (50g/109 yards) Knit One,

Crochet Two Brae Tweed OR

1 Skein (100g/164 yards) Knit Picks City

Tweed Heavy Weight

Gauge: 5 sts/inch, 7 rows/inch

Size: to fit head from 19-23 inches

Leafy Tops Hat

Instructions: Using smaller needles, CO 96 stitches using the long-tail cast on.

Join and work 7 rows k2, p2 ribbing.

Change to larger needles. Knit 4.25 inches (30 rows) of stockinette (hat measures 5.25" from CO edge).

Knit set up row: *pm, k24* 4 times.

Work decrease rows using written (pg. 2) OR charted (pg. 3) instructions. After, Cut yarn, string remaining live stitches along yarn tail using yarn needle. Sew in ends and block lightly to make the lace pop.

Written Instructions for Decrease Rows:

Row 1: *k9, k2tog, yo, k2, yo, ssk, k9* 4 times

Row 2: *k8, k2tog, yo, k4, yo, ssk, k8* 4 times

Row 3: *k6, k3tog, yo, k6, yo, k3togtbl, k6* 4 times- 88 sts

Row 4: Knit

Row 5: *k4, k3tog, yo, k8, yo, k3togtbl, k4* 4 times- 80 sts

Row 6: Knit

Row 7: *k2, k3tog, yo, k10, yo, k3togtbl, k2* 4 times- 72 sts

Row 8: Knit

Row 9: * k3tog, yo, k12, yo, k3togtbl * 4 times- 64 sts

Row 10: Knit

Row 11: *ssk, k12, k2tog* 4 times- 56 sts

Row 12: Knit

Row 13: *ssk, k10, k2tog* 4 times- 48 sts

Row 14: Knit

Row 15: *ssk, k8, k2tog* 4 times- 40 sts

Row 16: Knit

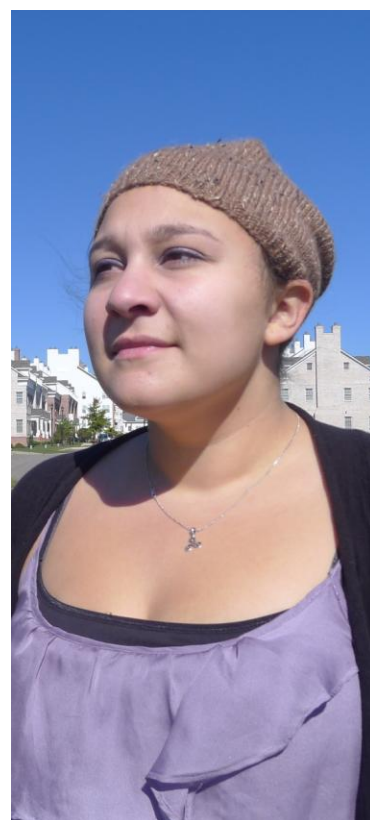
Row 17: *ssk, k6, k2tog* 4 times- 32 sts

Row 18: Knit

Row 19: *ssk, k4, k2tog* 4 times- 24 sts

Row 20: *ssk, k2, k2tog* 4 times- 16 sts

Row 21: *ssk, k2tog* 4 times- 8 sts



Legend		
	K	Knit
-	p	Purl
O	yo	Yarn Over
/	K2tog	Knit 2 tog
\	ssk	Slip, slip, knit
//	K3tog	Knit 3 together
\\	K3togtbl	Knit 3 together through the back loop

