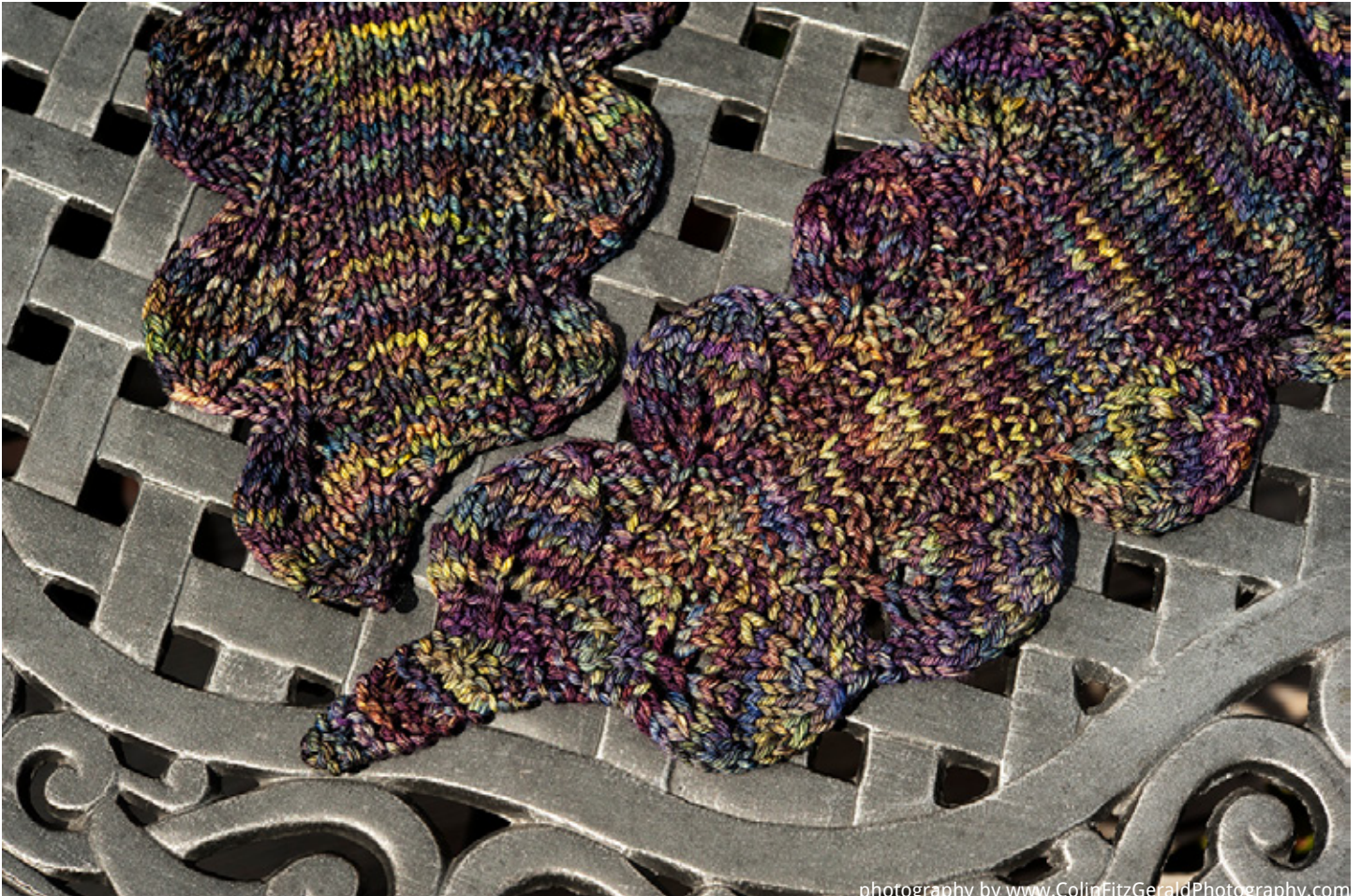




# Double Leaf Saronyan

By Liz Abinante  
with help from Teri



# Double Leaf Saroyan

By Liz Abinante  
with help from Teri  
support@feministy.com

Since I released Saroyan, many people have found ways to make it their own. Teri kindly shared her modifications on Ravelry, and with her permission I have reworked my original design to include a double leaf motif. My version of the double leaf motif includes a stem at the cast on point, and a lone leaf at the bind off. Asymmetrical, but just like a leaf. **This sample shown is knit with no straight repeats.**

## Yarn

Malabrigo Rios (100% superwash merino; 210 yards per 100 grams), shown in Candombe. Approximately 2 skeins.

## Gauge

US 10 (6mm) needle, 24" circular recommended  
4 sts per inch, 5 rows per inch

## Finished size

Widest point: 13 inches  
Wingspan: 78 inches

## Notions

Stitch markers (2)

k: knit	m1l: make one left
p: purl	CO: cast on
sl: slip	BO: bind off
tbl: through the back loop	st: stitch
kfb: knit through the front and back loop	sts: stitches
pssso: pass the slipped stitch over	rem: remain(ing)
k2tog: knit two together	rpt: repeat
k3tog: knit three together	rpts: repeats
ssk: slip, slip, knit two slipped stitches together	ndl: needle
p2tog: purl two together	yo: yarn over
slk2p: sl1, k2tog, pssso	RS: right side
	WS: wrong side

## Instructions

CO 3 sts.

## Set Up

Work this portion of the shawl using the Set Up Only Charts. Chart rows are indicated as "Left Leaf" or "Right Leaf" with the corresponding row number from the chart.

Row 1 (RS): k3  
Row 2 (WS): k3  
Row 3-4: k  
Row 5: k1, m1l, k2  
Row 6-8: k4  
Row 9: k2, m1l, k2  
Row 10-12: k5  
Row 13: k3, m1l, k2  
Row 14: k2, p1, k1, kfb, k1  
Row 15: k7  
Row 16: k2, p1, m1l, k4  
Row 17: k3, m1r, k5  
Row 18: k2, p1, k6

Row 19: k2, m1r, k1, pm, Left Leaf1  
Row 20: Left Leaf2, slm, k1, p1, k2  
Row 21: k4, m1r, slm, Left Leaf3  
Row 22: Left Leaf4, slm, k2, p1, k2  
Row 23: k3, kfb, k1, slm, Left Leaf5  
Row 24: Left Leaf6, slm, k3, p1, k2  
Row 25: Leaf Right1, slm, Left Leaf7  
Row 26: Left Leaf8, slm, Leaf Right2  
Row 27: Leaf Right3, slm, m1l, pm, Left Leaf9  
Row 28: Left Leaf10, slm, p to m, slm, Leaf Right4

## Increase Repeats

Work chart as follows:

Rows 1, 5, 11: Right Leaf, slm, k to m, m1l, slm, Left Leaf  
Rows 3, 7, 9, 13: Right Leaf, slm, k to m, slm, Left Leaf  
Even rows: Left Leaf, slm, p to m, Right Leaf

## Straight Repeats

Work chart as follows:

Odd rows: Right Leaf, slm, k to m, slm, Left Leaf  
Even rows: Left Leaf, slm, p to m, Right Leaf

## Decrease Repeats

Work one fewer Decrease Repeat than Increase Repeats (I worked 12 Increase Repeats, so I worked 11 Decrease Repeats).

Work chart as follows:

Rows 1, 5, 11: Right Leaf, slm, k to 2 sts before m, k2tog, slm, Left Leaf  
Rows 3, 7, 9, 13: Right Leaf, slm, k to m, slm, Left Leaf  
Even rows: Left Leaf, slm, p to m, Right Leaf

## Edge Leaf

There should be 5 sts remaining between your markers.

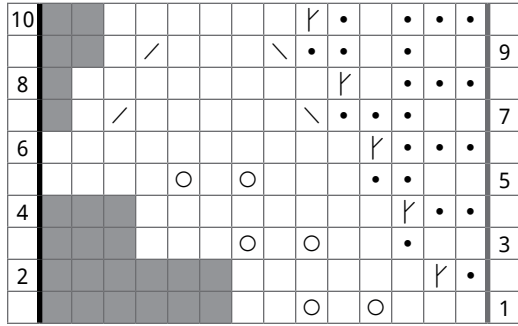
Work rows 1-15 of chart as follows:

Rows 1, 9: Right Leaf, k to 2 sts before m, k2tog, slm, Left Leaf  
Rows 3, 7, 13, 15: Right Leaf, slm, k to m, slm, Left Leaf  
Row 5: Right Leaf, k to 3 sts before m, k3tog, slm, Left Leaf  
Even rows: Left Leaf, p to m, Right Leaf

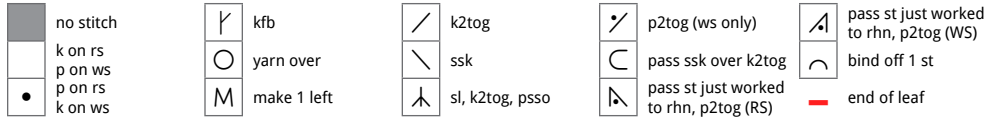
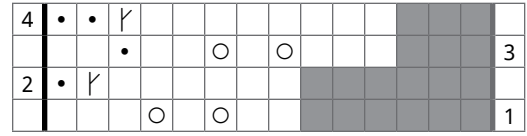
Row 16: bo4, remove m, k2, p10  
Row 17: k1, ssk, k5, k2tog, k2, slm, k3tog  
Row 18: k1, remove m, k2, p8  
Row 19: k1, ssk, k3, k2tog, k1, k2tog, k1  
Row 20, k1, p7  
Row 21: k1, ssk, k1, k2tog, k2  
Row 22: p2tog, p to end  
Row 23: k1, slk2p, k1  
Row 24: p3  
Row 25: slk2p

Pull yarn through last stitch.

### Left Leaf - Set Up Only

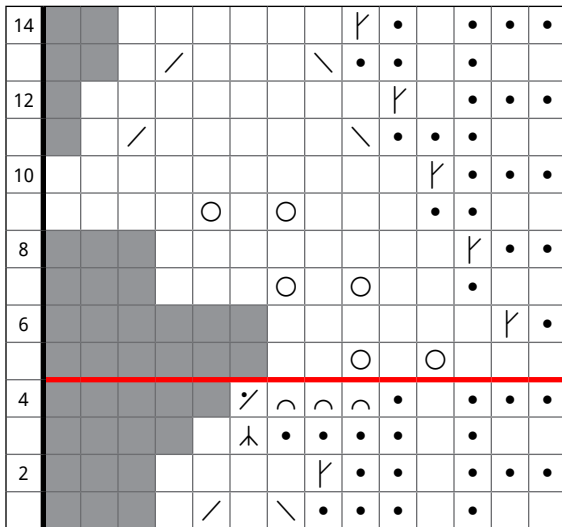


### Right Leaf - Set Up Only



## Increase Leaves

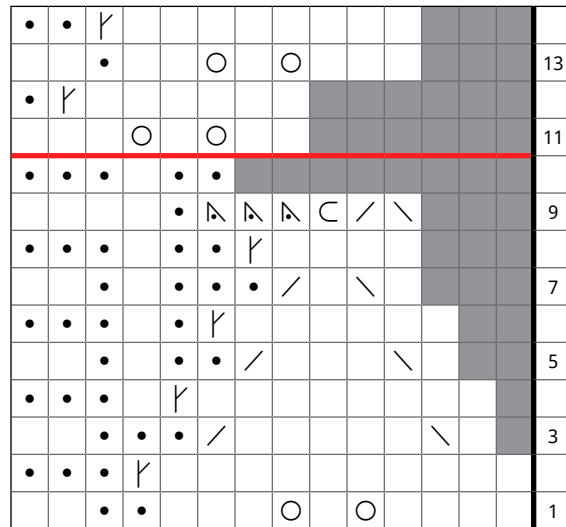
### Left Leaf



### Increases

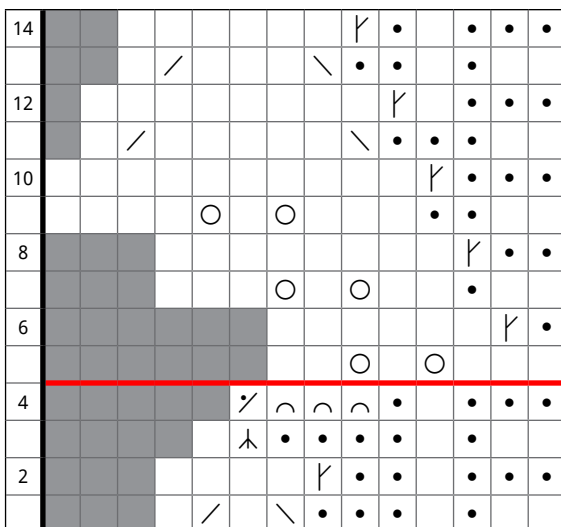


### Right Leaf

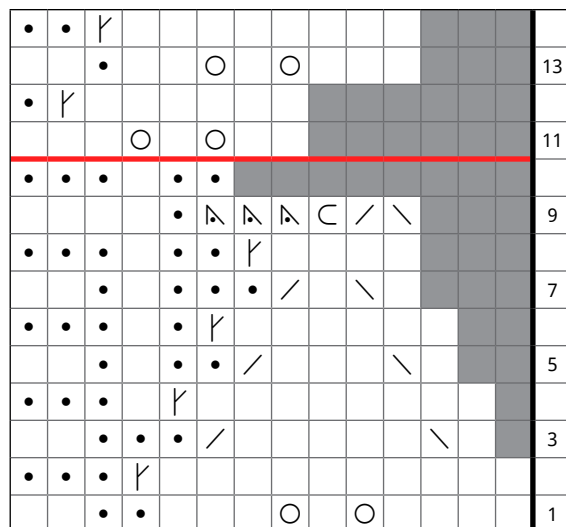


## Straight Leaves

### Left Leaf



### Right Leaf

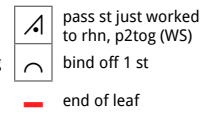
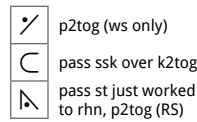
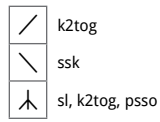
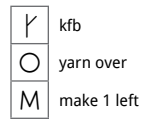
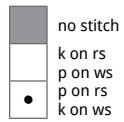
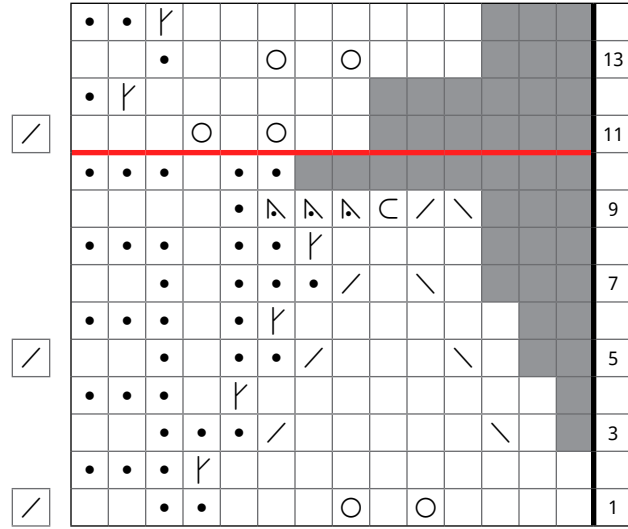
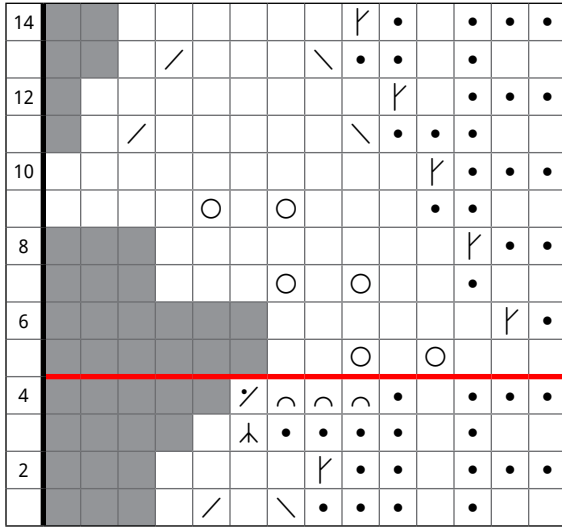


# Decrease Leaves

Left Leaf

Increases

Right Leaf



# Edge Leaves

Left Leaf

Decreases

Right Leaf

