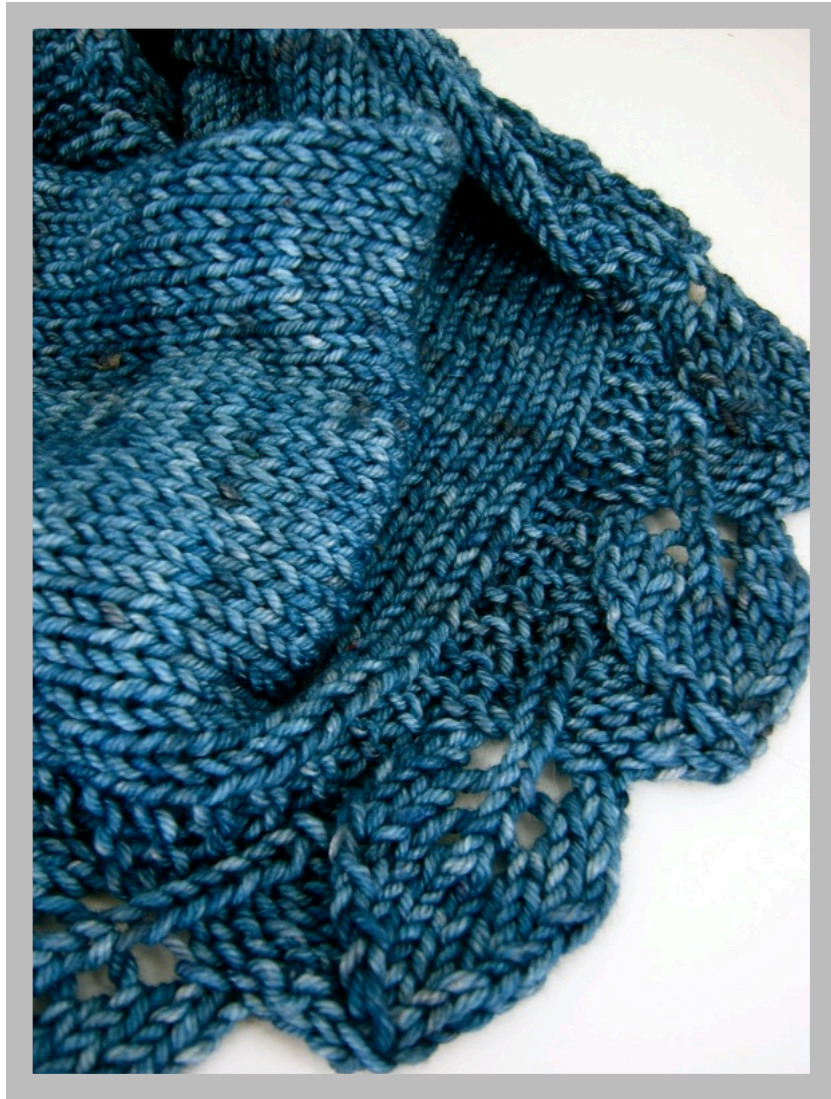


Saroyan

A simple scarf designed by Liz Abinante



Saroyan

Saroyan is the third pattern in a series inspired by the television show *Bones*. Previous patterns include *Traveling Woman* and *Temperance*.

Dr. Camille Saroyan is intelligent, graceful, and uncompromisingly organized. The simple lace scarf would fit right at home in sleek and professional wardrobe.

Knit in one piece from start to finish, Saroyan is a perfect project for beginning lace knitters. This tapered scarf can be worn a variety of ways, and the construction helps to keep your neck nice and cozy.

The lace edging used in this scarf is from a stitch dictionary titled *Super Stitches Knitting*.

Yarn:

Femme Fatale Fibers - Venus Worsted (185 yd/115 g), 2 skeins. Shown in Poison Sleep.
Available at <http://feminist.etsy.com>

Recommended needles:

One US 10 (6.0mm) circular needle, your choice of length (I'd recommend 24" or longer).

Gauge:

After blocking: 4 sts, 5 rows = 1 inch
I did not block very aggressively.

Finished Size:

12 in at widest point, 69 in long (tip to tip)

Pattern Notes:

Don't be afraid to be bold with this pattern. It can be knit in almost any yarn weight in practically any size. The increase, decrease, and straight sections are designed so that they can be easily added or subtracted to the pattern.

The worsted weight sample shown has 6 increase repeats, 10 straight repeats, and 6 decrease repeats (22 leaves total). Each repeat will give you one leaf. I had less than 5 grams of yarn left when finished.

The Leaf Edging is written in [brackets] so those who prefer knitting from charts can refer to the chart rather than the written instructions. *You do not repeat the information in the brackets!*

You will still need to read the written instructions for the non-lace portion of the scarf – but it's easy, I promise!

Abbreviations:

k: knit
p: purl
sl: slip
yo: yarn over
m1l: make one, left ([instructions](#)) ([video](#))
k2tog: knit two together
ssk: slip, slip, knit two slipped stitches together
slk2p: slip one, k2tog, pass the slipped st over
CO: cast on
BO: bind off
RS/WS: right side/wrong side
pm: place marker
slm: slip marker
rpt/s: repeat/s
st/s: stitch/es

Scarf shape and construction:

I've made a color-coded diagram to explain the construction and shape. The numbers in (parenthesis) indicate the number of stitches for the pattern as written.

The percentages indicate how much of your yarn you will need for each piece. These figures are approximate, not exact.

Bind off 11.

Decrease section:

Garter border (4)
Stocking body (5 dec/14 rows)
Leaf edge (varies)

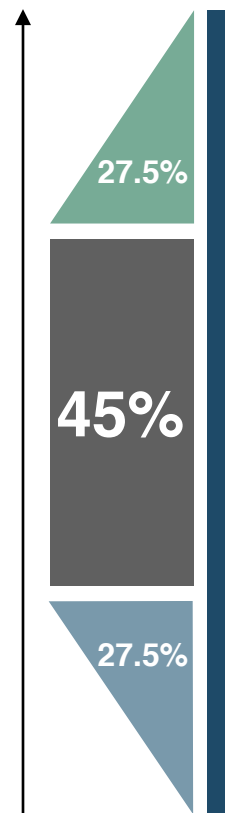
Straight section:

Garter border (4)
Stocking body (31)
Leaf edge (varies)

Increase section:

Garter border (4)
Stocking body (5 inc/14 rows)
Leaf edge (varies)

Cast on 11.



Instructions

Cast on 11 stitches.
 Row 1: k4, pm, k1, pm, k6
 Rows 2-4: knit all stitches

Work increase sections (6x).
 Work straight sections (10x).
 Work decrease sections (6x).
 Finish.

Leaf Edge Chart

I have charted the leaf edging for those who prefer working from charts.

Remember that this chart is only for the edging! You will still need to consult the written instructions for the increases and decreases of the scarf body. The chart is also printed on the second page for reference.

Right and wrong side rows are charted.
 Read right side rows from R to L, wrong side rows from L to R.

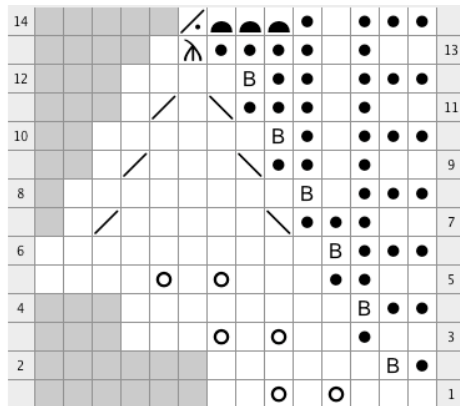


Chart Key

- | | | | |
|-------------------------------------|--|-------------------------------------|----------|
| <input type="checkbox"/> | RS: knit
WS: purl | <input checked="" type="checkbox"/> | ssk |
| <input checked="" type="checkbox"/> | yarn over | <input checked="" type="checkbox"/> | k2tog |
| <input checked="" type="checkbox"/> | no stitch | <input checked="" type="checkbox"/> | slk2p |
| <input checked="" type="checkbox"/> | RS: purl
WS: knit | <input checked="" type="checkbox"/> | bind off |
| <input checked="" type="checkbox"/> | RS & WS:
knit thru
front & back
loops | <input checked="" type="checkbox"/> | p2tog |

Increase section

Each repeat will give you one leaf. Six leaves are shown in the sample.

- Row 01: k4, slm, k to m, m1l, slm, [k3, yo, k1, yo, k2]
 Row 02: [p6, k1fb, k1], slm, p to m, slm, k4
 Row 03: k4, slm, k to m, slm, [k2, p1, k2, yo, k1, yo, k3]
 Row 04: [p8, k1fb, k2], slm, p to m, slm, k4
 Row 05: k4, slm, k to m, m1l, slm, [k2, p2, k3, yo, k1, yo, k4]
 Row 06: [p10, k1fb, k3], slm, p to m, slm, k4
 Row 07: k4, slm, k to m, m1l, slm, [k2, p3, ssk, k5, k2tog, k1]
 Row 08: [p8, k1fb, p1, k3], slm, p to m, slm, k4
 Row 09: k4, slm, k to m, m1l, slm, [k2, p1, k1, p2, ssk, k3, k2tog, k1]
 Row 10: [p6, k1fb, k1, p1, k3], slm, p to m, slm, k4
 Row 11: k4, slm, k to m, slm, [k2, p1, k1, p3, ssk, k1, k2tog, k1]
 Row 12: [p4, k1fb, k2, p1, k3], slm, p to m, slm, k4
 Row 13: k4, slm, k to m, m1l, slm, [k2, p1, k1, p4, slk2p, k1]
 Row 14: [p2tog, bind off 3, k1, p1, k3], slm, p to m, slm, k4

Repeat rows 1-14 until:
 (a) desired width is achieved

Straight section

Each repeat will give you one leaf.
 Ten leaves are shown in the sample.

- Row 01: k4, slm, k to m, slm, [k3, yo, k1, yo, k2]
 Row 02: [p6, k1fb, k1], slm, p to m, slm, k4
 Row 03: k4, slm, k to m, slm, [k2, p1, k2, yo, k1, yo, k3]
 Row 04: [p8, k1fb, k2], slm, p to m, slm, k4
 Row 05: k4, slm, k to m, slm, [k2, p2, k3, yo, k1, yo, k4]
 Row 06: [p10, k1fb, k3], slm, p to m, slm, k4
 Row 07: k4, slm, k to m, slm, [k2, p3, ssk, k5, k2tog, k1]
 Row 08: [p8, k1fb, p1, k3], slm, p to m, slm, k4
 Row 09: k4, slm, k to m, slm, [k2, p1, k1, p2, ssk, k3, k2tog, k1]
 Row 10: [p6, k1fb, k1, p1, k3], slm, p to m, slm, k4
 Row 11: k4, slm, k to m, slm, [k2, p1, k1, p3, ssk, k1, k2tog, k1]
 Row 12: [p4, k1fb, k2, p1, k3], slm, p to m, slm, k4
 Row 13: k4, slm, k to m, slm, [k2, p1, k1, p4, slk2p, k1]
 Row 14: [p2tog, bind off 3, k1, p1, k3], slm, p to m, slm, k4

Repeat rows 1-14 until:
 (a) desired length is achieved (remember, you will be mirroring the increase section and adding to the length)
 (b) there are ten (straight) leaves + six (increase) leaves = 16 leaves total
 (c) you've used one-half (1/2) of your yarn.
 Switch to decrease sections.

Decrease section

Each repeat will give you one leaf.
 Six leaves are shown in the sample.
 Pay attention to the instructions at the end!

- Row 01: k4, slm, k to 3 sts before m, k2tog, k1, slm, [k3, yo, k1, yo, k2]
- Row 02: [p6, k1fb, k1], slm, p to m, slm, k4
- Row 03: k4, slm, k to m, slm, [k2, p1, k2, yo, k1, yo, k3]
- Row 04: [p8, k1fb, k2], slm, p to m, slm, k4
- Row 05: k4, slm, k to 3 sts before m, k2tog, k1, slm, [k2, p2, k3, yo, k1, yo, k4]
- Row 06: [p10, k1fb, k3], slm, p to m, slm, k4
- Row 07: k4, slm, k to 3 sts before m, k2tog, k1, slm, [k2, p3, ssk, k5, k2tog, k1]
- Row 08: [p8, k1fb, p1, k3], slm, p to m, slm, k4
- Row 09: k4, slm, k to 3 sts before m, k2tog, k1, slm, [k2, p1, k1, p2, ssk, k3, k2tog, k1]
- Row 10: [p6, k1fb, k1, p1, k3], slm, p to m, slm, k4
- Row 11: k4, slm, k to m, slm, [k2, p1, k1, p3, ssk, k1, k2tog, k1]
- Row 12: [p4, k1fb, k2, p1, k3], slm, p to m, slm, k4
- Row 13: k4, slm, k to 3 sts before m, k2tog, k1, slm, [k2, p1, k1, p4, slk2p, k1]
- Row 14: [p2tog, bind off 3, k1, p1, k3], slm, p to m, slm, k4

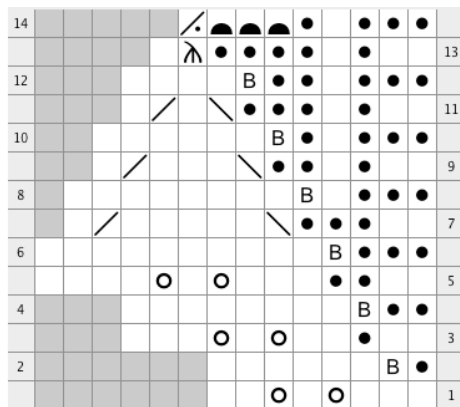
Repeat rows 1-14 the same number of times you did for the increase section.
 On the last repeat, knit rows 13 and 14 as follows:

- Row 13: k4, slm, k2tog, slm, [k2, p1, k1, p4, slk2p, k1]
- Row 14: [p2tog, bind off 3, k1, p1, k3], remove m, p1, remove m, k4

You should have 11 stitches remaining.

Finishing

Knit 4 rows in garter stitch.
 Bind off, block, adore.



- RS: knit
WS: purl
- ◻ ssk
- yarn over
- ◻ k2tog
- no stitch
- ◻ slk2p
- ◻ RS: purl
WS: knit
- ◻ bind off
- ◻ RS & WS:
knit thru
front & back
loops
- ◻ p2tog