



Katy  
Tricot

## COLVERT

This elegant and feminine cowl/infinity scarf with a beautiful cable and lace pattern is worked in the round. Whether it is worn open or wrapped twice around the neck, this cowl will brighten any outfit.

### Gauge

15 sts and 19 rows = 4"/10 cm in St st

### Yarn

3 skeins Katia Scotch Tweed (87 yds/80 m. each) – 65% Silk, 26% Wool, 9% Rayon or any aran yarn that will knit to gauge

### Needles

US 7 ( 4.5 mm) 31" (80cm) circular needles or size needed to get gauge  
Cable needle

### Notions

Stitch marker for beginning of round  
Tapestry needle for weaving in ends

### Finished Measurements

47 ½ " / 121 cm circumference, 8" / 20 cm width after blocking

### Difficulty

This pattern is suitable for knitters with some experience

### Skills used

Knit and purl, cable knitting, knitting in the round

## DIRECTIONS

Cast on 180 sts, join to begin working in the round, taking care not to twist stitches. Place marker to indicate beginning of round.

**Rnd.1:** Knit

**Rnd. 2:** Purl

**Rnd.3:** \*K2tog, yo; repeat from \* around

**Rnd.4:** Purl

**Rnd.5:** Knit

**Rnd. 6:** \*yo, K1, P2, K2, K2tog, P2, Ssk, K2, P2, K1, yo, P2; repeat from \* around

**Rnd.7:** \*K2, P2, K3, P2, K3, P2, K2, P2; repeat from \* around

**Rnd.8:** \*K1, yo, K1, P2, K1, K2tog, P2, Ssk, K1, P2, K1, yo, K1, P2; repeat from \* around

**Rnd.9:** \*K3, P2, K2, P2, K2, P2, K3, P2; repeat from \* around

**Rnd.10:** \*K2, yo, K1, P2, K2tog, P2, Ssk, P2, K1, yo, K2, P2; repeat from \* around

**Rnd.11:** \*K4, P2, K1, P2, K1, P2, K4, P2; repeat from \* around

**Rnd.12:** \*K3, yo, K1, P1, K2tog, P2, Ssk, P1, K1, yo, K3, P2; repeat from \* around

**Rnd.13:** \*K5, P1, K1, P2, K1, P1, K5, P2; repeat from \* around

**Rnd.14:** \*K4, yo, K1, K2tog, P2, Ssk, K1, yo, K4, P2; repeat from \* around

**Rnd.15:** \*K4, P1, K2, P2, K2, P1, K4, P2; repeat from \* around

**Rnd.16:** \*C4F, P1, yo, K2tog, P2, Ssk, yo, P1, C4B, P2; repeat from \* around

**Rnds.17-19:** \*K4, P2, K1, P2, K1, P2, K4, P2; repeat from \* around

**Rnd.20:** \*C4F, P2, K1, P2, K1, P2, C4B, P2; repeat from \* around

**Rnd.21:** \* K4, P2, K1, P2, K1, P2, K4, P2; repeat from \* around

**Rnd.22:** \*Ssk, K2, P2, K1, yo, P2, yo, K1, P2, K2, K2tog, P2; repeat from \* around

**Rnd.23:** \*K3, P2, K2, P2, K2, P2, K3, P2; repeat from \* around

**Rnd.24:** \*Ssk, K1, P2, K1, yo, K1, P2, K1, yo, K1, P2, K1, K2tog, P2; repeat from \* around

**Rnd.25:** \*K2, P2, K3, P2, K3, P2, K2, P2; repeat from \* around

**Rnd.26:** \*Ssk, P2, K1, yo, K2, P2, K2, yo, K1, P2, K2tog, P2; repeat from \* around

**Rnd.27:** \*K1, P2, K4, P2, K4, P2, K1, P2; repeat from \* around

**Rnd.28:** \*Ssk, P1, K1, yo, K3, P2, K3, yo, K1, P1, K2tog, P2; repeat from \* around

**Rnd.29:** \*K1, P1, K5, P2, K5, P1, K1, P2; repeat from \* around

**Rnd.30:** \*Ssk, K1, yo, K4, P2, K4, yo, K1, K2tog, P2; repeat from \* around

**Rnd.31:** \*K2, P1, K4, P2, K4, P1, K2, P2; repeat from \* around

**Rnd.32:** \*Ssk, yo, P1, C4B, P2, C4F, P1, yo, K2tog, P2; repeat from \* around

**Rnds.33-35:** \*K1, P2, K4, P2, K4, P2, K1, P2; repeat from \* around

**Rnd.36:** \*K1, P2, C4B, P2, C4F, P2, K1, P2; repeat from \* around

**Rnd.37:** \*K1, P2, K4, P2, K4, P2, K1, P2; repeat from \* around

**Rnd.38:** \*yo, K1, P2, K2, K2tog, P2, Ssk, K2, P2, K1, yo, P2; repeat from \* around

**Rnd.39:** \*K2, P2, K3, P2, K3, P2, K2, P2; repeat from \* around

**Rnd.40:** \*K1, yo, K1, P2, K1, K2tog, P2, Ssk, K1, P2, K1, yo, K1, P2; repeat from \* around

**Rnd.41:** \*K3, P2, K2, P2, K2, P2, K3, P2; repeat from \* around

**Rnd.42:** \*K2, yo, K1, P2, K2tog, P2, Ssk, P2, K1, yo, K2, P2; repeat from \* around

**Rnd.43:** \*K4, P2, K1, P2, K1, P2, K4, P2; repeat from \* around

**Rnd.44:** \*K3, yo, K1, P1, K2tog, P2, Ssk, P1, K1, yo, K2, P2; repeat from \* around

**Rnd.45:** \*K5, P1, K1, P2, K1, P1, K5, P2; repeat from \* around

**Rnd.46:** \*K4, yo, K1, K2tog, P2, Ssk, K1, yo, K4, P2; repeat from \* around

**Rnd.47:** Knit

**Rnd.48:** Purl

**Rnd.49:** \*K2tog, yo; repeat from \* around

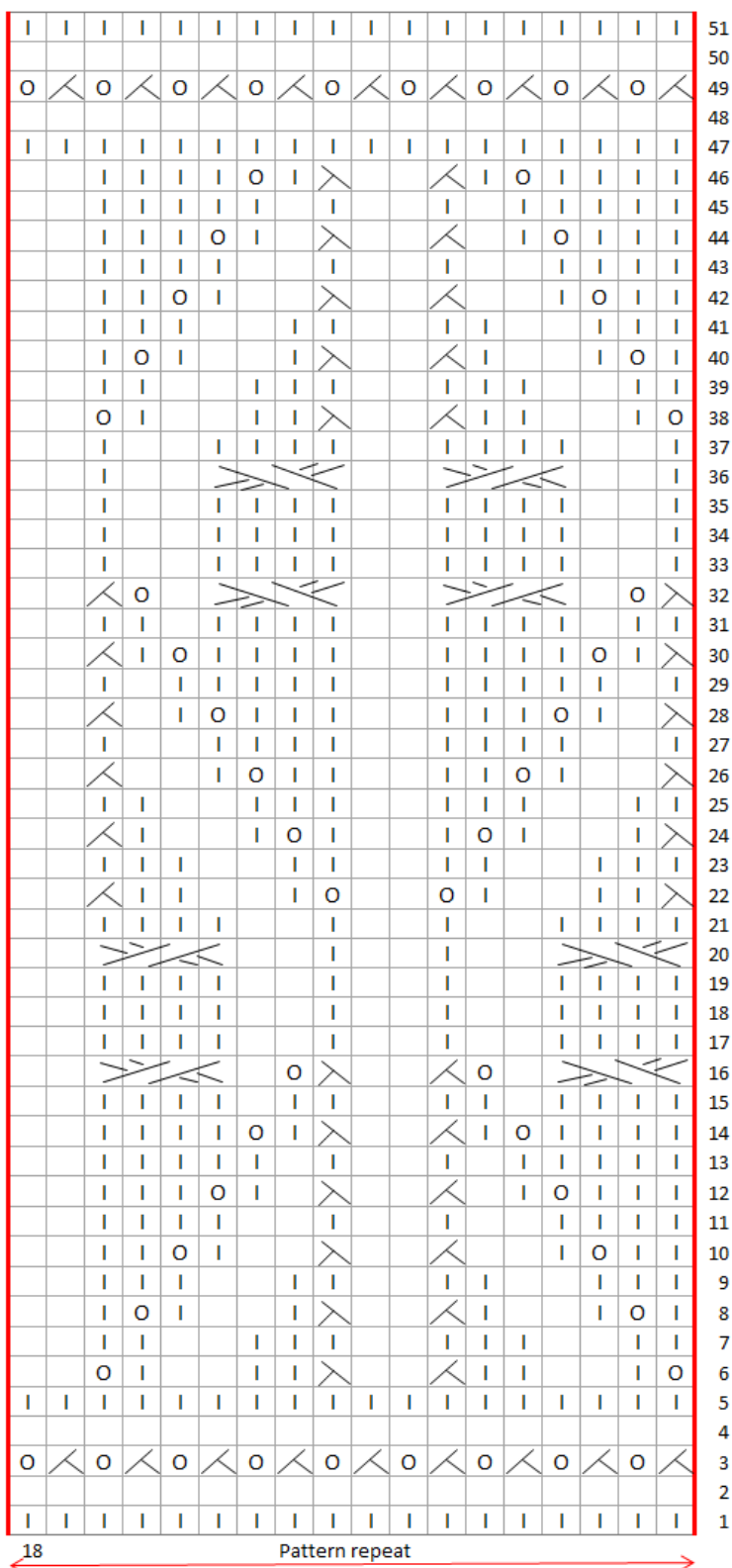
**Rnd.50:** Purl

**Rnd.51:** Knit



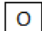




**Finishing and blocking**

Weave in ends. Soak cowl in tepid water for 10-15 minutes. Squeeze gently and roll in towel. Press to remove excess water and block cowl.

CHART FOR COLVERT COWL



Stitch Key

-  K
-  P
-  yo
-  K2tog
-  Ssk
-  C4F
-  C4B

- Abbreviations**
- Sts** - stitches
  - Rnd(s)** - round(s)
  - K** - knit
  - P** - purl
  - yo** - yarn over
  - K2tog** - knit 2 sts together
  - Ssk** - slip 2 sts as if to knit, then knit those two together through the back loops
  - C4F** - place 2 sts on CN and hold in front; K2, K2 from CN
  - C4B** - place 2 sts on CN and hold in back; K2, K2 from CN
  - CN** - cable needle

The chart is read from right to left on all rounds