

## The Love Yarn Christmas Jumper



Size	S	M	L	XL
Bust	32-34	36-38	40-42	46-48 inches

### Tension

We strongly recommend that you do a tension square to ensure that your jumper comes out to the required size.  
20sts 26 rows in stocking stitch (We recommend either 5mm however some of our test knitters used 4.5mm to get the correct tension)

### Requirements

All yarn quantities are for Rico essentials Soft Merino Aran 50g balls

#### **Reindeer**

	S	M	L	XL
MC	7	8	8	10
CC	1	1	1	1
Buttons	13	14	15	17

#### **Snowmen**

	S	M	L	XL
MC	7	8	8	10
CC	1	1	1	1
Hats/Scarves/Eyes	13	14	15	17
Noses	Small quantity of orange yarn			

#### **Puddings**

	S	M	L	XL
MC	7	8	8	10
CC1	1	1	1	1
CC2	1	1	1	1
Buttons	13	14	15	17
Holly leaves	Small quantity of green yarn			

Needles: 4mm, 5mm

### Abbreviations

MC – Main colour  
 CC – Contrasting colour  
 PM – Place marker  
 BOR – Beginning of round  
 M1 – make 1 (increase 1 stitch)

K2tog – Knit the next two stitches together (decrease 1 stitch)  
 2x2 ribbing – knit 2, purl 2, repeat around  
 sl1 – slip one stitch knitwise  
 pss0 – pass the slipped stitch over

## **Sleeves**

Using 4mm needles and MC yarn, cast on 44(44, 48, 48) stitches, PM for BOR and join for working in the round, making sure not to twist the stitches.

\*knit 2, purl 2; repeat from \* to the end of round.

Continue in 2x2 ribbing until cuff measures 2 inches/5cm.

Change to 5mm needles and work in stocking stitch (knit all stitches in every round) for 3(4, 4, 4) rounds.

### **Sleeve Increase round**

Knit 2, M1, knit to last 2 stitches, M1 knit 2. 46(46, 50, 50) stitches.

Continuing in stocking stitch, repeat the Sleeve Increase Round every 15<sup>th</sup>(13<sup>th</sup>, 7<sup>th</sup>, 7<sup>th</sup>) round, 6(8, 8, 12) more times. 58(62, 66, 74) stitches.

Continue in stocking stitch until sleeve measures 17.5(17.5, 17.75, 18) inches/44(44, 45, 46)cm from cast on edge ending 8(8, 9, 10) stitches before BOR marker in the last round.

Slip the next 16(16, 18, 20) stitches onto waste yarn or a short cable (removing the marker as you reach it) and place on hold for underarm.

**Repeat for the second sleeve.**

## **Body**

Using 4mm needles and MC yarn, cast on 164(180, 196, 228) stitches, PM for BOR and join for working in the round, making sure not to twist the stitches.

\*knit 2, purl 2; repeat from \* to the end of round.

On the next round place another marker after 82(90, 98, 114) stitches for the side.

Continue in 2x2 ribbing until cuff measures 2 inches/5cm.

Change to 5mm needles and work in stocking stitch until the work measures 12(12.5, 13, 14) inches/30.5(32, 33, 35.5)cm.

### **Body Increase round**

\*Knit 2, M1, knit to 2 stitches before marker, M1, knit 2, slip marker, repeat from \* once more. (4 stitches increased) Knit 6 rounds and repeat the Body Increase Round again. 172(188, 204, 236) stitches.

Continue in stocking stitch for 5(5, 6, 7) rounds. On the final round, knit to the side marker, remove the marker, knit 8(8, 9, 10) stitches and place the previous 16(16, 18, 20) stitches on waste yarn or a short cable, on hold for the underarm. Continue knitting until 8(8, 9, 10) stitches before the BOR marker. Place the next 16(16, 18, 20) stitches on waste yarn or a short cable, removing the BOR marker as you reach it.

You will now have a total of 16(16, 18, 20) held underarm stitches at each side of the Body, 140(156, 168, 196) Body stitches remain – 70(78, 84, 98) for each Front and Back.

## **Yoke**

Join the body and sleeves to form the yoke by:

With the right side facing, and continuing with a 4.5mm needle and MC yarn attached to the left side of your Back stitches, PM for BOR. Knit across 42(46, 48, 54) Sleeve stitches, knit across 70(78, 84, 98) Front stitches, knit across 42(46, 48, 54) Sleeve stitches, knit across 70(78, 84, 98) Back stitches.

You will now have 224(248, 264, 304) stitches on the needles with the BOR marker at the back left shoulder.

Knit 1 round.

On the next round decrease 16(24, 24, 32) stitches evenly across the next round. 208(224, 240, 272) stitches remain.

Knit 1(2, 3, 5) rounds.

Using the fairisle technique, work from the chart repeating the 16 stitch motif 13(14, 15, 17) times and working the decreases as marked on the chart.

On completion of the chart you will have 78(84, 90, 102) stitches remaining.

Knit 1 more round, decreasing 2(0,2,2) stitches across the round. 76(84, 88, 100) stitches.

## **Neck**

Changing to 4mm needles, \*knit 2, purl 2, repeat from \* to end of round.

Continue in 2x2 ribbing for 1 inch/2.5cm and cast off using a sewn cast off.

## **Embellishments**

### **Reindeer**

Sew on button noses and swiss darn 2 eyes.

### **Snowmen**

Scarf: Cast on 30 stitches, cast stitches off.

Hat: Cast on 9 stitches, working in stocking stitch, work 2 rows. Cast off 2 stitches at the beginning of the next 2 rows. Work 4 more rows and cast off.

Nose: Cast on 3 using orange yarn, cast off.

Swiss darn eyes.

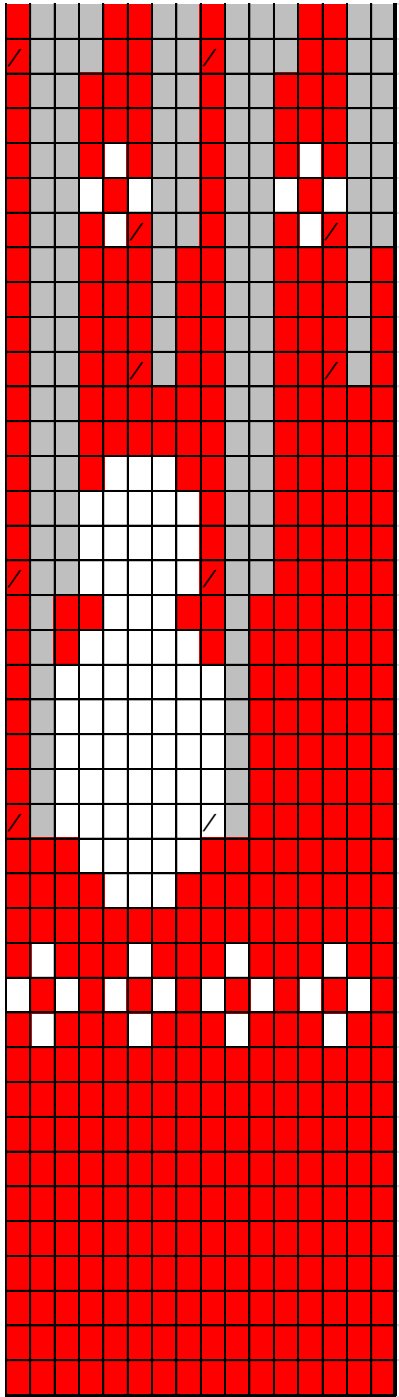
### **Pudding**

Holly: Cast on 7 stitches.      Row 1: k2tog, k3, k2tog  
   Row 2: k2tog, k1, k2tog  
   Row 3: sl1, k2tog, pssso  
   Row 4: cast off 1 stitch

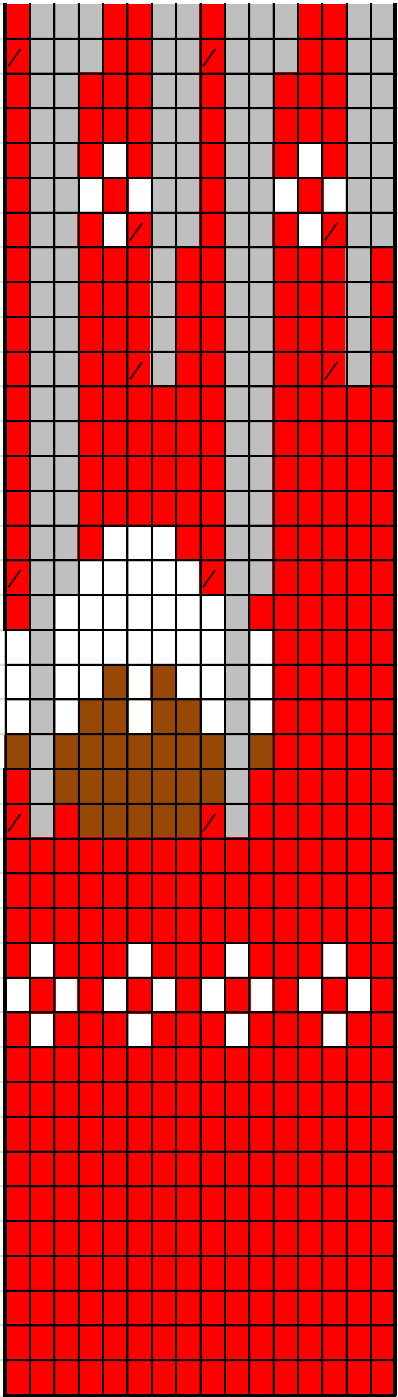
Berries: Sew on buttons

## **Finishing**

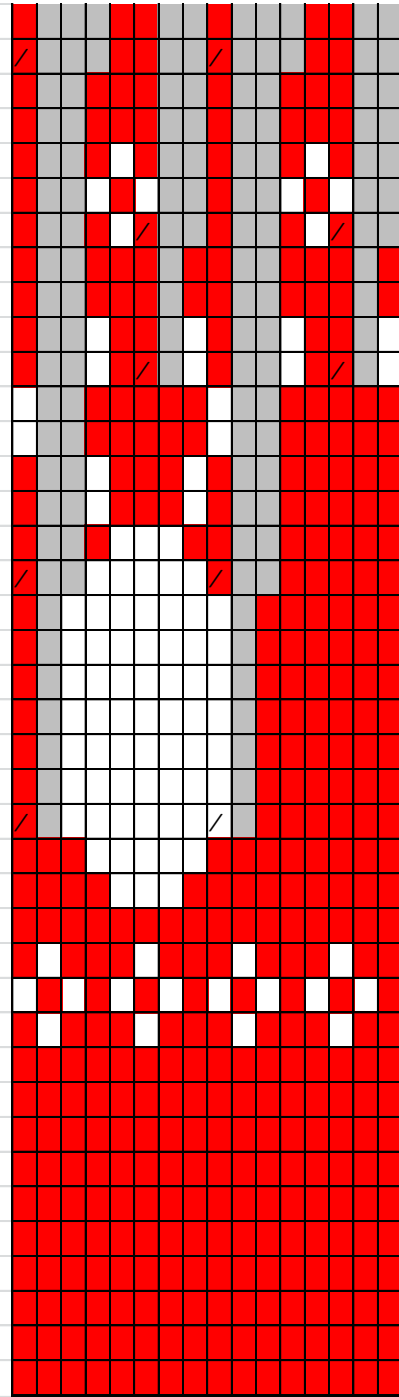
Weave in all ends and graft together the underarm seams.



40  
39  
38  
37  
36  
35  
34  
33  
32  
31  
30  
29  
28  
27  
26  
25  
24  
23  
22  
21  
20  
19  
18  
17  
16  
15  
14  
13  
12  
11  
10  
9  
8  
7  
6  
5  
4  
3  
2  
1



40  
39  
38  
37  
36  
35  
34  
33  
32  
31  
30  
29  
28  
27  
26  
25  
24  
23  
22  
21  
20  
19  
18  
17  
16  
15  
14  
13  
12  
11  
10  
9  
8  
7  
6  
5  
4  
3  
2  
1



40  
39  
38  
37  
36  
35  
34  
33  
32  
31  
30  
29  
28  
27  
26  
25  
24  
23  
22  
21  
20  
19  
18  
17  
16  
15  
14  
13  
12  
11  
10  
9  
8  
7  
6  
5  
4  
3  
2  
1

- MC
- CC1
- CC2
- No Stitch
- / k2tog