

OLIVIA CARDIGAN

by Veronika Lindberg



This is a pattern for a simple yet elegant cardigan. It is knitted on a circular needle back and forth from bottom-top.

There are two different types of lace stitches, one at the hem of the cardigan and another one around the yoke.

What you need:

Yarn: Cascade Yarns 220 in colour Olive(no 9566)
apprx. 450g (900metres/990yards)

Needles: circular needle 4mm-US 6 (80 or 100 cm), double-pointed needles 4mm-US 6

Gauge: 20sts x 20rows= 10cmx10cm(4inches)

8 buttons

Size: S-M, bust 90 cm(appr.36 inches)

Abbreviations:

sts=stitches

K=knit

P=purl

K2tog=knit two together

dpn=double-pointed needle

Explanations:

2(K3, P2)= knit what is inside the parenthesis x amount of times, in this case K3, P2, K3, P2, or 5(Char A) then you knit Chart A 5 times

Symbols:

□=knit on the right side, purl on the wrong side

● =purl on the right side, knit on the wrong side

λ=knit two together from the back of the loops (or slip one, knit one, pull the first stitch over the second)

∧=knit two together from the front of the loops

λ=slip one, knit two together from the back of the loops, pull the slipped stitch over the second stitch

∧=knit three together from the front of the loops

○=yarn over

Body

Start by casting on 192 stitches on the 4mm circular needle. Knit double rib stitch the first 6 rows(*K2, P2* on the right side *P2, K2* on the wrong side).

Row 7:

P2, Increase 1, P1, *K4, P1, K4, P7*, repeat *-* 10 more times(=11 times altogether), K4, P1, K4, P4 (=193 sts)

Row 8:

K4, *P4, K1, P4, K7*, repeat *-* 10 more times (11 times altogether), P4, K1, P4, K4

Row 9:

Chart A (row 1) 12 times, P1

Row 10:

K1, Chart A (row 2) 12 times

Row 11-22:

Right side: 12(Chart A), P1

Wrong side K1, 12(Chart A)

Row 23-25:

Right side: 12(Chart A), K1

Wrong side: P1, 12(Chart A)

Row 26->:

Wrong side:

P7, *K1, P13*, repeat *-* 10 more times (11 times altogether), K1, P7

Right side: K7, *P1, K13* repeat *-* 10 more times(11 times altogether), P1, K7 (=169 sts)

Continue knitting until the height of the body is about 40 cm(16inches). Knit the last row on the wrong side and put work aside while you make the sleeves.

Chart A

Read the chart from left to right on the right side and from right to left on the wrong side. On row 17 the stitches decrease from 16 to 14, rows 18-21 are 14 sts.

21									●										
									●										
19									●										
									●										
17				○	∧	●	∧	○											
			○	∧	∧	●	∧	○											
15		○	∧			●		∧				○							
	○		∧			●		∧				○							
13	○		∧			●		∧				○							○
	●		○		∧	●	∧		○										
11	●		○		∧	●	∧		○										
	●	○		∧		●		∧		○									
9	●	○		∧		●		∧		○									○
	●	∧		○		●		○		∧									∧
7	●	∧		○		●		○		∧									∧
	●		∧		○	●		○		∧									
5	●		∧		○	●	○		∧										
	●	∧		○		●		○		∧									∧
3	●	●	∧		○			○		∧									●
	●	●	●	∧		○		○		∧	●	●							●
1	●	●	●	●	∧		○	●	○		∧	●	●	●					●
	2	4	6	8	10	12	14	16											

Sleeves

The sleeves are knitted one at a time on 4mm double-pointed needles. Start by casting on 40 sts and start knitting in the round.

Row 1-6:

K2, P2, repeat *-* until end of row

Row 7-49:

K40

Row 50:

K1, Increase 1, K38, Increase 1, K1

Row 51:

K42

Continue like this, increasing with one stitch between the first and last two stitches of the row(the row increases with two stitches) every 9th row until you have 54 stitches. The sleeve length should be about 50 cm(20 inches).

Put aside and knit the other sleeve the same way.

Putting body and sleeves together:

Knit with circular needle 4mm. Start putting it all together so that you have the right side up.

Row 1(joining sleeves and body together):

K7, 2(P1, K13), P1, K3

cast off 8 stitches from the body needle together with 8 stitches from the sleeve needle(4 stitches from the first and last dpn), K46 from sleeve needle, K2, 5(P1, K13), P1, K2, cast off 8 stitches from the body needle together with 8 stitches from the sleeve needle(4 stitches from the first and last dpn),

K46 from sleeve needle, K3, 2(P1, K13),P1, K7

Row 2(wrong side):

P7, K1, 2(P13, K1), P51, K1, 5(P13, K1), P51, K1, 2(P13, K1), P7
(=245sts)

Row 3-18:

Right side: K7, 2(P1, K13), P1, K51, P1, 5(K13, P1), K51, P1, 2(K13, P1), K7

Wrong side: P7, K1, 2(P13, K1), P51, K1, 5(P13, K1), P51, K1, 2(P13, K1), P7

Row 19(start decreasing on the right side):

K7, P1, 2(K3, K2tog, K3, K2tog, K3, P1), P1, 12(K2, K2tog), K3, P1, 5(K3, K2tog, K3, K2tog, K3, P1),5(K2, K2tog, K3, K2tog), K2, K2tog, K3, P1, 2(K3, K2tog, K3, K2tog, K3, P1),P1, K7 (=204 sts)

Row 20(wrong side):

P7, K1, 2(P11, K1), P39, K1, 5(P11, K1), P40, K1, 2(P11, K1), P7

Row 21:

K7, P1, 2(K11, P1), K39, P1, 5(K11, P1), K40, P1, 2(K11, P1), K7

Row 22:

P7, K1, 2(P11, K1), P39, K1, 5(P11, K1), P40, K1, 2(P11, K1), P7

Row 22-39:

Knit Chart B(rows 1-17) 17 times (17x12sts=204sts)

Row 40-45:

Continue knitting rows 15-17 of Chart B two more times(in other words, 6 more rows of moss stitch).

Row 46:K204**Row 47:**P204**Row 48:**

K2, K2tog (=153 sts)

Row 49: P153**Row 50:** K153**Row 51:** P153

Row 52: K11,K2tog, *K3, K2tog*, repeat *-* until end of line

Row 53: P124**Row 54:** K124**Row 55:** P124

Row 56: *K2tog* , repeat *-* until end of row (=62sts)

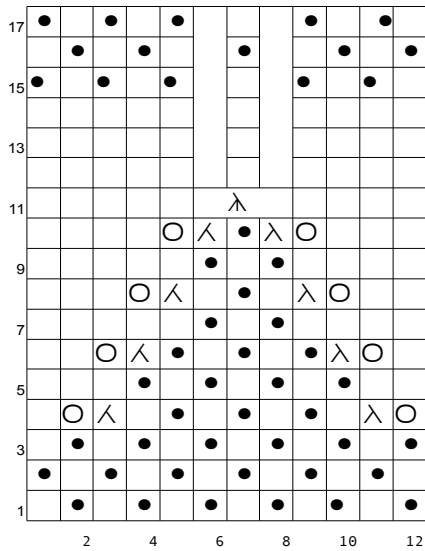
Row 57: *P2, K2*, repeat *-* until end of row

Row 58-63: Double rib stitch(right side *K2, P2*, wrong side *P2, K2*).

Cast off.

Chart B

Read the chart from left to right on the right side and from right to left on the wrong side. On row 12 the stitches decrease from 12 to 10, rows 12-17 are 12 sts.



Edging

Right edge:

Use circular needle 4mm to pick up 78 stitches from the right edge.

Row 1(right side):

K78

Row 2:

P2, K2 repeat *-* until end of row

Row 3-8:

Continue double rib stitch.

Cast off.

Left edge:

Use circular needle 4mm to pick up 78 stitches.

Row 1 (right side):

K78

Row 2(rows 2-4 are double rib stitch):

P2, K2 repeat *-* until end of row.

Row3:

K2, P2 repeat *-* until end of row

Row 4:

P2, K2 repeat *-* until end of row.

Row 5(making the buttonholes):

K2, P2 and cast off 1(pull the first stitch over the second using the left needle), K2, P2, K2, P2, repeat *-* 5 more times,

K2, P2 and cast off 1, K2

Row 6:

P1, P2 together, cast on 2, P2, K2, P2, K2, repeat *-* 5 more times, P1, P2 together, cast on 2, P2

Row 7:

K2, P2 repeat *-* until end of row

Row 8-9:

Continue rib stitch two more rows and cast off.

Sew the buttons onto the right edge so that they match the buttonholes along the left edge.

Finish off any lose ends and enjoy your new Olivia Cardigan!