



MATERIALS

Standard 4 ply (fingering) yarn, 100% wool.
We recommend Susan Crawford Excelana 4 Ply

Two colour tie

2 × 50g balls – Yarn A
1 (or oddment) × 50gm ball – Yarn B

One colour tie

2 × 50g balls
1 pair 3mm (US 3) needles

Backing (optional)

Strip of fabric 150cm long × 12cm wide
Needle and matching thread

TENSION

28 sts and 36 rows = 10cm (4in) using 3mm
needles over stocking stitch.

SIZING

137cm (54in) long, 12cm (3½in) at widest point, 4cm (1½in) at narrowest point.

A little about the Chevrolet logo

This tie features the famous Chevrolet logo. First used in 1913, the “Bowtie” symbol, as it is known, has become one of the world’s most recognised trademarks and is still used by the company today. There are a number of different stories around as to how co-founder of Chevrolet, William C. Durant, first came up with the emblem. One version is that it originated in Duran’s imagination when, as a world traveller in 1908, he saw the pattern marching off into infinity as a design on wallpaper in a French hotel. He tore off a piece of the wallpaper and kept it to show friends with the thought that it would make a good nameplate for a car. Another account is that according to Mrs. Durant, the bowtie emblem was first seen by her husband in an illustrated Virginia newspaper, while they were vacationing in Hot Springs, Virginia around 1912. Mrs. Durant was quoted as recalling, “We were in a suite reading the papers, and he saw this design and said, ‘I think this would be a very good emblem for the Chevrolet.’”

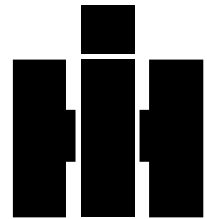
But no matter where the inspiration came from that led to its creation, it has proved to have been a very distinctive and identifiable emblem.

As a knitting project I just liked the idea of having a bowtie on a tie. And if you are thinking of knitting this tie, to give to that special someone in your life, you can tell them – it’s not quite a classic 1953 Chevy Corvette sports car, but maybe, it’s the next best thing!



An added extra

Having recently purchased a vintage International Harvester tractor – called Iris, for use on the farm, I have also produced a chart for this equally iconic badge, that is often known as the ‘man on tractor’ logo and first started to appear on tractors in the late 1940s. Alternatively why not create your own design, using the blank chart provided, or if you prefer knit an un-embellished tie in a single colour or stripes.



[Iris can be seen in my blog post here: <http://justcallmeruby.blogspot.co.uk/2015/09/autumn-has-arrived-in-this-part-of.html>]

PATTERN NOTES

Work chart section of tie using intarsia method and stocking stitch. The rest of the tie is worked in moss stitch.

Cast on 22 sts using 3mm needles and Yarn B.

Row 1 (WS): K.

Next 2 rows: K.

Change to Yarn A.

Row 1 (RS): * K1, P1, rep from * to end.

Row 2: * P1, K1, rep from * to end.

These two rows set pattern. Continue as set until work measures 15cm (6in) ending with a WS row.



Commence working from chart as follows:

Next row: (K1, P1) 3 times, K1, work row 1 of chart using Yarn B, P1, patt to end.

Maintaining moss st edging round motif, work until all rows of chart are completed.

Continue in moss st and Yarn A only. Maintaining patt, dec 1 st at each end of every 10th row until 12 sts rem.

Continue working on these 12 sts only until work measures 135cm (53in), ending with a RS row.

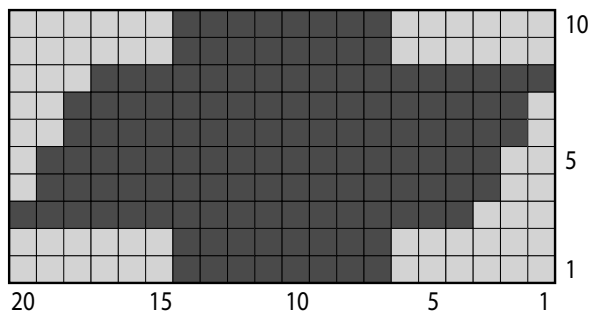
Change to Yarn B, and work 3 rows in garter stitch. Cast off.

MAKING UP

Darn in ends. Block lightly. If preferred the tie can be strengthened by backing with a lightweight fabric. Cut a piece of fabric roughly the same size and shape as the tie. Fold in all edges to wrong side and press firmly. Pin backing in place to WS of tie, ensuring it sits slightly within edges of tie. Slipstitch into position using matching thread. Press again.



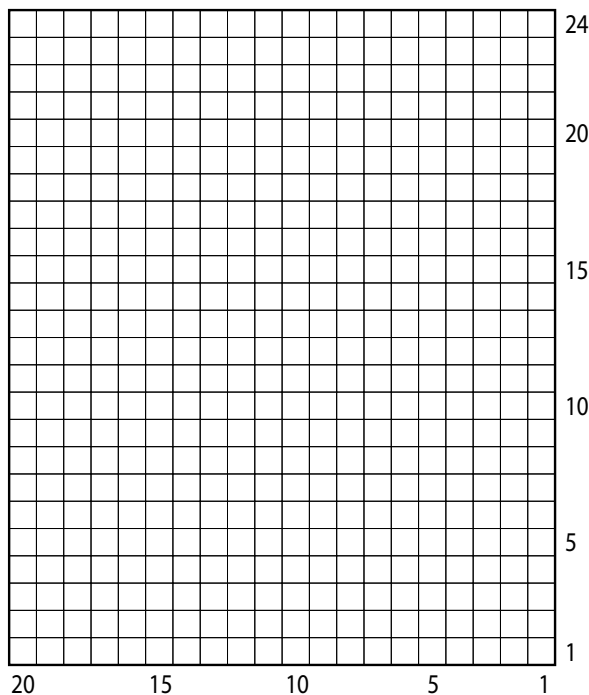
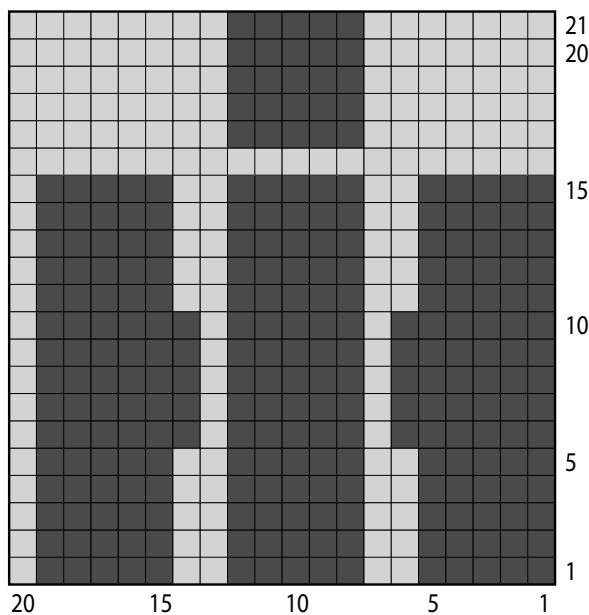
Chevrolet



Key

- Yarn A; Knit on RS, Purl on WS
- Yarn B; Knit on RS, Purl on WS

International Harvester



ABBREVIATIONS st(s) – stitch(es) mm – millimetres **Patt** – pattern **dec** – decrease, usually by knitting or purling two together
K – knit **cm** – centimetres **RS** – right side **Rep** – repeat
P – purl **in** – inches **WS** – wrong side **rem** – remaining

for fashion lovers



Susan Crawford

Vintage Knitting

Susan Crawford is a British designer, author and fashion historian, specialising in vintage knitwear and with a range of publications and extensive experience in the knitting and fashion industry, is widely regarded as an expert in her craft. Susan's name has become synonymous with well executed designs that either draw inspiration from bygone days to create original pieces or re-interpret vintage patterns for a contemporary audience. Susan is a celebrated designer, stylist and publisher who is dedicated to authenticity and beauty.

Titles from Susan include:

A Stitch In Time, Vintage Knitting Patterns, Volumes 1 and 2, Vintage Gifts to Knit and Coronation Knits.



A Stitch In Time : Volume 1



A Stitch In Time : Volume 2



Fenella 2 Ply



A unique 100% British wool, grown, spun, dyed and finished in Britain. A 2 ply yarn that knits up to that elusive vintage '3 ply' tension. It is an extremely versatile yarn which can be knitted on a variety of needle sizes to give different results. Susan has spent many months examining original hand knitted garments from the 1930s to the 1950s and from these she extracted 16 shades which reflect the colours found in these garments. Fenella has been spun for us by John Arbon of Fibre Harvest. Susan then worked very closely with a yarn dyer in the Borders of Scotland to recreate the colours, exactly as she required. Fenella is available in 25g skeins making it perfect for colourwork projects. The metreage on each skein is approximately 124m. The skeining and banding of the yarn all takes place on our farm making this a truly artisan product.

Excelana

— vintage yarns for fashion lovers —



In collaboration with John Arbon Textiles, Susan has created a unique 100% British knitting yarn called Excelana. Inspired by knitting wools from the 1920s to the 1950s the range is available in 4 ply and DK weights. With a colour palette selected by Susan, this is truly a vintage yarn for the modern day knitter.



COQUETTE

4 Ply Vintage Cotton



knitshop yarns has collaborated Susan to create an exclusive cotton range inspired by vintage yarns.

Coquette 4ply Cotton Yarn is a 4ply mercerised cotton of the highest quality. Available in a choice of 12 historically inspired colours. Susan has created the colour palette to effortlessly match vintage shades from the 1930s to 1950s.

www.susancrawfordvintage.com

To see the full range of yarns, patterns, books and kits please visit: www.susancrawfordvintage.com



If you need any help or guidance with regards to this pattern please email: patternsupport@susancrawfordvintage.com

This pattern is covered by copyright law and all rights remain with the designer. No part of this pattern may be reproduced in any form, transmitted in any form or by any means, be it print, electronic, photocopying, translation or otherwise, in any format or under any circumstances without prior permission of the copyright holder. Similarly, none of the items may be reproduced or used for any commercial purposes including promotion or sales, individual or otherwise, without prior permission of the copyright holder. Copyright © Susan Crawford 2008. All rights reserved. Photographed by Susan Crawford.