

Iron Man Knitted Toy
By Stana D. Sortor



Disclaimer: This knitting pattern was design by me. The toy was inspired by Iron Man, which is copyrighted characters of DC Comics.

Finished Toys size: Approximately 10” tall (26 cm)

Yarn:

Any worsted weight in these colors:

About 100 yards / 92 meters – MC (red)

About 50 yards / 46 meters – CC (gold)

About 15 yards / 14 meters – C1 (white)

About 5 yards / 4.5 meters of black yarn

Recommended Needles size: DPN US #5/3.75mm (set of 5)

Notions: Yarn needle, crochet hook, stitch holders, scissors, stitch marker, polyester fiberfill (1 small bag)

Abbreviations:

DPN = Double pointed needles

K = Knit

P = Purl

KFB = Knit in front and back of the same st, it creates 2 sts from 1 st.

SSK = Slip st, slip st and knit the 2 sts together. This decreases 2 sts to 1 st.

<http://stana-critters-etc.blogspot.com/>

K2tog = Knit 2 sts together. This decreases 2 sts to 1 st.

R = Round

MC = Main Color (red)

CC = Contrasting Color (gold)

C1 = Contrasting Color (white)

Sts = stitches

Techniques:

Intarsia in the round:

* If you are not sure how to do intarsia in the round, I would suggest to look for tutorial on YouTube, there are some great tutorials that explain the process step by step. Here is a link to one of many videos that are available on the subject.

<https://www.youtube.com/watch?v=ofSotC-vPSw>

Gauge: 18 sts & 27 rows = 4" in stockinette stitch.

INSTRUCTIONS:

The toy is knitted from bottom to top. Starting with one leg, then second, joining the two legs together, continue through body to the top of head. The arms are knitted separately then sewn on, or you can just pick up the stitches directly on the body.

Here is a link to photo tutorial how to pick up stitches directly:

<http://stana-critters-etc.blogspot.com/2011/06/how-to-attach-arms-without-sewing-them.html>

When casting on leave a longer tail to be used for sewing.

First Leg:

With MC yarn and three double pointed needles cast on 8 sts. Place a stitch marker on the first st, and begin working in the round.

R 1: Knit around (8 sts total)

R 2: KFB all around (16 sts total)

R 3 – 16: Knit around. Cut off MC. Attach CC.

R 17 - 24: Knit around, transfer the sts to the stitch holders. Cut the yarn, leaving long enough tail.

Second Leg:

With MC yarn and three double pointed needles cast on 8 sts. Place a stitch marker on the first st, and begin working in the round.

R 1: Knit around (8 sts total)

R 2: KFB all around (16 sts total)

R 3 – 16: Knit around. Cut off MC. Attach CC.

R 17 - 24: Knit around.

Continue with Body:

Arrange the two legs next to each other. Work with MC.

R 25: Knit first 8 sts of the second leg, continue with 16 sts of the first leg, finishing up the round with the last 8 sts of the second leg (32 sts total)

R 26 – 48: Knit around

Thread the tail of yarn from the cast on stitches on a yarn needle. Stitch through all of the cast on stitches, pull up tight to close the hole, and stitch to secure. Begin to stuff the legs with fiberfill.

Continue stuffing the toy with fiberfill.

<http://stana-critters-etc.blogspot.com/>

Continue with Head:

R 49: Knit around. Attach CC

Row 50 – 63: * Continue in intarsia in the round technique, follow the row by row instruction, or use the chart R1 – R14.

Row 50: K5 in MC, K6 in CC, K21 in MC

Row 51: P20 in MC, P8 in CC, P4 in MC

Row 52: K3 in MC, K10 in CC, K19 in MC

Row 53: P18 in MC, P12 in CC, P2 in MC

Row 54: K1 in MC, K14 in CC, K17 in MC

Row 55: P17 in MC, P14 in CC, P1 in MC

Row 56: K1 in MC, K14 in CC, K17 in MC

Row 57: P17 in MC, P14 in CC, P1 in MC

Row 58: K1 in MC, K14 in CC, K17 in MC

Row 59: P17 in MC, P14 in CC, P1 in MC

Row 60: K1 in MC, K6 in MC, K2 in CC, K6 in CC, K17 in MC

Row 61: P19 in MC, P4 in CC, P2 in MC, P4 in CC, P3 in MC

Row 62: K4 in MC, K3 in MC, K2 in CC, K3 in CC, K20 in MC

Row 63: P20 in MC, P3 in CC, P2 in MC, P3 in CC, P4 in MC

Cut off CC and continue with MC in the round.

R 64: *SSK, K6; repeat from * around (28 sts total)

R 65: *K 2, SSK, K3; repeat from * around (24 sts total)

R 66: *K 3, SSK, K1; repeat from * around (20 sts total)

R 67: *SSK, K3; repeat from * around (16 sts total)

R 68: *K2, SSK; repeat from * around (12 sts total) Finish stuffing.

Cut the yarn, leaving long enough tail, and thread the end on a yarn needle. Pull the end through the remaining stitches on needle, gather up and close the hole, stitch to secure.

Thread the tail of yarn from the top of the first leg on a yarn needle. Stitch through the stitches in between the two legs to close the hole, and stitch to secure.

Arms (make 2):

With MC and three DPN cast on 12 sts. Place a stitch marker on the first st, and begin working in the round.

R 1: Knit around. Attach CC.

R 2 - 9: Knit around. Begin to stuff the arm with fiberfill. Cut off CC. Continue with MC.

R 10 - 17: Knit around 7 rounds

R 18: SSK all around (6 sts total)

Finish stuffing. Cut the yarn, leaving long enough tail, and thread the end on a yarn needle. Pull the end through the remaining stitches on needles, gather up and close the hole, stitch to secure.

Thread the tail from the cast on sts on a yarn needle and sew the arms on the side of the toy, using the picture as a guide.

Emblem on chest:

With the C1 yarn and three double pointed needles, cast on 4 sts. Place the stitch marker on the first st and begin working in the rounds.

R 1: Knit around (4 sts total)

R 2: KFB all around (8 sts total)

R 3: Knit around (8 sts total)

<http://stana-critters-etc.blogspot.com/>

R 4: KFB all around (16 sts total)

R 5: Knit and Bind off.

Sew the white circle on the chest of the toy, using the picture as a guide.

Finishing:

Cut a long piece of red yarn and thread it on a yarn needle. Begin by one arm and weave the yarn in and out around the toy's neck, tight the two ends of the yarn together to shape the neck.

Embroider the mask, using the picture as a guide. Use the white yarn for the eye openings, and black yarn for the mouth opening.



Contact: crowsd@yahoo.com

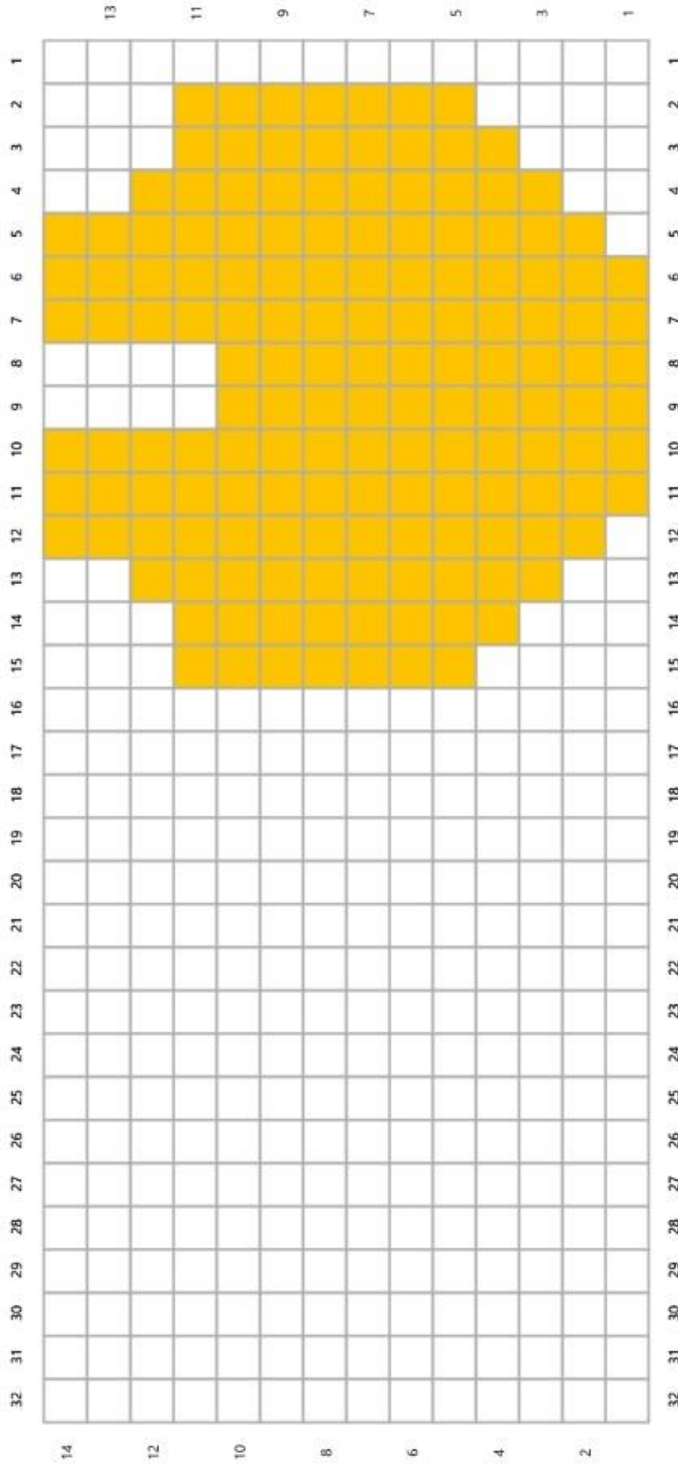
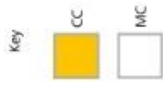
<http://www.facebook.com/pages/Stanascritters-etc/185797874789792>

<http://stana-critters-etc.blogspot.com/>

<http://www.etsy.com/shop/Stanascrittersetc>

<http://stana-critters-etc.blogspot.com/>

Face chart:



<http://stana-critters-etc.blogspot.com/>