

# NORO CATHERINE WHEEL SCARF

Inspired by Moonstitches' Rhubarb Scarf, this pattern uses Noro Silk Garden Sock and a Catherine Wheel stitch to make a charming, pretty scarf.

This pattern was written using American crochet terminology. Charts are on the last page.

## MATERIALS

Size E (3.5 mm) crochet hook

Color A: 1 or 2 skeins Noro Silk Garden Sock

Color B: 1 skein Noro Silk Garden Sock in a contrasting color

Tapestry needle

With one skein of each color, you'll end up with a scarf about 45" long before blocking. This uses up all of color A, but only a little over half of color B, because color A is also used for the border.

To make a longer scarf, use an additional skein of color A. If you go until you run out of color B, you'll use one skein each on the body, then about two-thirds of the second skein of color A on the border.

The pictured scarf was made with one skein each of color S269 (white/natural) and S264 (green/blue/purple).



## SPECIAL INSTRUCTIONS

The following stitch is used to create half of the Catherine Wheel pattern:

**Cluster (CL):** (yo, insert hook into st, yo and draw loop through st, yo and draw through 2 loops on hook) over the number of sts indicated, yo, draw through all loops on hook.

You know you're doing it right if you end up with loops for the number of stitches plus 1 before drawing the final loop through (e.g., CL over 7 sts results in 8 loops on hook before final yo and draw-through.)

## BODY

The Catherine Wheel is a 10-stitch repeating pattern. This pattern is 4 wheels wide (about 5" not counting the border), but you can add or subtract repeats to create a wider or narrower scarf. When changing colors, carry the non-working yarn up the side. It will be covered by the border later.

With color A, ch 44.

**Row 1:** 3 dc in 4<sup>th</sup> ch from hook. skip 3 ch, sc in each of next 3 ch, skip 3 ch, \* 7 dc in next ch, skip 3 ch, sc in each of next 3 ch, skip 3 ch; repeat from \* 2 times, 4 dc in last ch, turn.

Switch to color B.

**Row 2:** ch 2 (counts as first sc), sc into next st, \* ch 3, CL over next 7 sts, ch 3, sc in each of next 3 sts; repeat from \* 2 times, ch 3, CL over next 7 sts, ch 3, sc in last 2 sts, turn.

**Row 3:** ch 2 (counts as first sc), sc in next sc, skip 3 ch, 7 dc into loop that closed CL, \* skip 3 ch, sc in each of next 3 sc, skip 3 ch, 7 dc into loop that closed CL; repeat from \* 2 times, skip 3 ch, sc in last 2 sts, turn.

Switch to color A.

**Row 4:** ch 3 (counts as first dc), CL over next 3 sts, \* ch 3, sc in each of next 3 sts, ch 3, CL over next 7 sts; repeat from \* 2 times, ch 3, 1 sc in each of next 3 sts, ch 3, CL over next 4 sts, turn.

**Row 5:** ch 3 (counts as first dc), 3 dc in same st, \* skip 3 ch, sc in each of next 3 sc, skip 3 ch, 7 dc into loop that closed CL; repeat from \* 2 times, skip 3 ch, sc in each of next 3 sc, skip 3 ch, 4 dc into loop that closed CL, turn.

Repeat rows 2-5 for the length of the scarf, stopping at row 4 when desired length is reached. Cut color B and move on to the border with color A.

If you're using only 1 skein of each color, stop at 34 repeats (34 stripes of color B) to save enough color A for the border. You'll need to leave at least 40 grams out of a 100-gram skein.

## BORDER

The border finishes the semicircles on all edges of the scarf. A round of dense picots creates a ruffled effect.

**Rnd 1:** With color A, ch 3 (counts as first dc), 3 dc in same st, then follow the directions for the short edge below. 11 dc in the next corner, then work long edge, 11 dc in corner, work short edge, 11 dc in corner, work long edge.

**Short edge (scarf ends):** sl st each of 3 sts, (7 dc in center of color A semicircle, sl st in each of 3 sts) to corner.

**Long edge (scarf sides):** sc in each of the 2 color B sts, (7 dc in center of color A semicircle, sc in each of the 2 color B sts) to corner.

When you get to the last corner, 7 dc in corner (total 11 dc in corner counting starting dcs).

**Rnd 2:** Sc in first dc of previous round to join, ch 3, sc in same st. Working only in dc sts of previous round (skipping sl sts and scs), (1 sc, 3ch, 1 sc) in each dc around. Sl st to join, tie off.



## FINISHING

After completing the border, cut A and weave in all ends with the tapestry needle.

Noro yarn really softens with good soak and block. Let the finished scarf soak in cool water and a bit of wool wash or conditioner. Gently squeeze the water out and lay flat to dry, pinning the edges if necessary. This scarf was 48" x 6½" after blocking.

## VARIATION

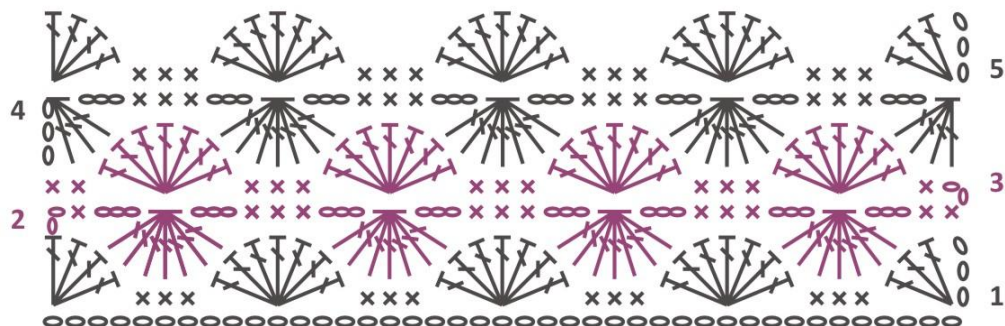
Try Kureyon Sock and a 2.75 mm hook for a more delicate scarf. For a 5-wheel scarf, start with a chain of 54, and repeat the wheel pattern for each row 3 times instead of 2.

## CHARTS

The following charts show how to work the body and border of the 4-wheel scarf.

### BODY

Repeat rows 2-5. End with row 4.



### BORDER

Repeat pattern around. 11 dc in bottom corners. Join final round with slip st.

