

# The Evan Scarf

By Cinnamon Wright of Miscellaneous Design Studio



**Deep ribbing flanks the plush cable and garter stitch body.  
Suitable for knitters new to cabling. An easy knit for experienced cable knitters.**

**Finished Dimensions:** 6.75"x68" (can easily be lengthened)

**Yarn:** 2 skeins: Everyday (100% Acrylic, 203 yards) in *Pine Green* by Premier Yarns

**Yardage:** 400-500 yards of worsted weight yarn

**Needles:** Size 6 (4.25mm) and Size 8 (5mm)

**Notions:** Cable needle, Yarn needle for weaving in ends

**Gauge:** 5 stitches per inch in garter on Size 8 needles.

**Abbreviations:**

C/O: Cast-on

Sl: Slip the first stitch of each row purlwise (with yarn in front), bring the working yarn back between stitch 1 and 2 before working the row.

K: Knit

P: Purl

B/O: Bind-off

C8F: Cable 8 Front

C8B: Cable 8 Back

**Pattern Stitch:**

2x2 rib: Knit 2, Purl 2\*

C8F: place 4 stitches on the cable needle, hold the cable needle in front of the work, knit the next 4 stitches, knit all of the stitches off the cable needle.

C8B: place 4 stitches on the cable needle, hold the cable needle to the back of the work, knit the next 4 stitches, knit all of the stitches off the cable needle.

**Tips:** A scarf longer than 68" will require additional yarn.

To eliminate most counting on purl and cabling rows, place stitch markers flanking the cable, after the 10<sup>th</sup> and 30<sup>th</sup> stitches. Slip the markers every row, maintaining their position.

**Pattern Instructions:**

**Body:**

With smaller needles: C/O 40.

Work in 2x2 rib for 4" (I worked 25 rows).

Switch to larger needles. Work the next 12 rows 31 times. Then work rows 1-4 once more. (For a longer scarf, increase the number of pattern repeats you work. This will require additional yarn.)

Row 1: Sl 1, k39.

Row 2: Sl 1, K9, P20, K 10.

Row 3: Sl 1, K9, K4, C8F, C8F, K10.

Row 4: Sl 1, K9, P20, K 10.

Row 5: Sl 1, k39.

Row 6: Sl 1, K9, P20, K 10.

Row 7: Sl 1, k39.

Row 8: Sl 1, K9, P20, K 10.

Row 9: Sl 1, K9, C8B, C8B, K4, K10

Row 10: Sl 1, K9, P20, K 10.

Row 11: Sl 1, k39.

Row 12: Sl 1, K9, P20, K 10.

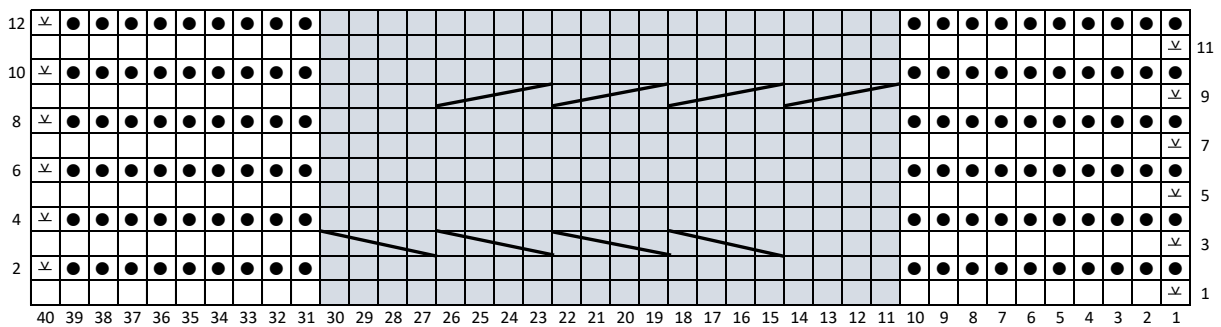
Switch to smaller needles.

Work in 2x2 rib for 4" (I worked 25 rows).



With larger needle, B/O loosely, in pattern.

**Chart:**

Evan Scarf Chart



Legend:

- ⌞ Sl 1 stitch purlwise with yarn in front
- Knit on RS, Purl on WS
- Purl on RS, Knit on WS
-  Cable 8 Front
-  Cable 8 Back

Courtesy of: ColorNotes Yarn, LLC [www.colornotesyarn.com](http://www.colornotesyarn.com)

**Finishing:**

Weave in ends. Wool and Wool-blends are suitable for light blocking, if desired.

Go grab a coffee, you deserve it.

